



**RAINHILL
HIGH SCHOOL**



Year 9 OPTIONS 2024



RainhillSixth

#paystostay

Year 9 Options Process

Dear students,

Having the opportunity to choose the subjects that you will study from Year 10 onwards can be both exciting and daunting. You have much to consider as you make choices that will help you to pursue your interests and career aspirations in the future.

What can I choose?

You will see from this brochure that we offer a wide range of subjects to suit all skills, interests and abilities.

Compulsory subjects (the subjects that all students study to GCSE) are English Language, English Literature, Maths and Science. PE, Citizenship, PSHE are also studied for all students.

Your remaining curriculum time is divided into four further subjects across the Arts, Performing Arts, Sport, Business and Computing which will be allocated upon the outcome of the option process.

Some students may wish to complete the English Baccalaureate suite of qualifications, which include a language and a humanities subject alongside the compulsory subjects listed above.

What happens next?

We will provide a wide range of support and guidance to ensure that you make a fully informed decision about your options. You will have already been talking about careers pathways, the local market and post-16 routes during tutorial and PSHE lessons. Your teachers will also have been discussing KS4 courses within your lessons and we have already held the annual careers fair.

Perhaps the most important opportunity you will have to help you will be the face to face meeting that you will have with one of the senior members of staff. This will be an opportunity for you to talk through your thoughts and ask any questions you may have.

Parents evening (29th February) and Options Evening (7th March) will further enable you to explore the pathways that are best for you.

Will I get my first-choice subjects?

We will make every effort to fulfil your first choices for options. However, if a subject is oversubscribed (we have a set number of teaching classes for each subject), you may be allocated a reserve subject, so it is important to make sure that you choose your reserve subjects carefully. We will talk to you about this when this happens.

How do I make my choices?

You will complete your options form online and further information about how you can go about doing this will be provided in the Options Evening on the 7th March.

I hope you enjoy the next few weeks as you make choices about your future

Best wishes,



Mrs W Segal
Deputy Headteacher – Quality of Education

Finding your way around this booklet

CORE CURRICULUM

(You have to study these subjects)

GCSE English Language
GCSE English Literature
GCSE Mathematics
GCSE Science
PE

RE, Citizenship, Health Education and Careers will be studied through tutorial and drop-down days.

OPTIONS

In this booklet you will find details of all of the possible courses that are available to you at Rainhill High School.

You will be able to choose up to four option subjects dependant on your pathway.

*N.B. You must be studying German or Spanish in Year 9 to choose them.
Please only choose ONE from Art Graphics, Art Textiles or Fine Art.*

OPTION CHOICES

Your option choices will be made clear through your personalised online platform, details of which will be sent out through Synergy. Your teachers and support staff have worked together to ensure that you have been assigned to the most appropriate suite of option choices. To further support this, you will also be assigned a key member of staff to provide personal guidance, should you require this.

HELPING YOU MAKE YOUR CHOICES.

This key highlights the various skills and types of activity likely to be used in subjects. Use it to help you match your preferred ways of learning to different subjects.



EXTENDED WRITING



WORKING WITH MY HANDS



USING NUMBERS



PERFORMING ACTIVITIES



DESIGN & CREATE PROJECT



USING ICT (NOT GAMING)



DESIGN & CREATE PROJECT



SPEAKING IN FRONT OF OTHERS



GCSE English Language is the key to life: How we communicate. How we influence. How we make sense of the world around us: The course equips you with the skills needed to thrive in the 21st Century.

WHAT DOES THE COURSE OFFER ME?

- Clearly structured papers which allow candidates to show what they know, understand and can do.
- Tasks covering a range of writing skills.
- Prose reading from the 20th century.
- Thematically linked 19th and 21st century non-fiction reading tasks which are accessible whilst offering appropriate stretch and challenge.
- A focused approach to spoken language.
- This skills-based specification allows breadth of study and flexible teaching approaches and offers excellent co-teachability with GCSE English Literature.
- A course that will help students develop the skills, knowledge and understanding they will need for further study, work and everyday life.

WHAT DOES THE COURSE INVOLVE?

The GCSE in English Language specification builds on a long experience of assessing reading and writing skills in a variety of contexts.

GCSE	CORE
HOW WILL I BE ASSESSED?	
Examination (100%)	
Component 1: 20th Century Literature Reading and Creative Prose Writing Written examination: 1 hour 45 minutes 40% of qualification	
<ul style="list-style-type: none"> • Section A (20%) – Reading • Section B (20%) – Prose Writing 	
Component 2: 19th and 21st Century Non-Fiction Reading and Transactional / Persuasive Writing Written examination: 2 hours 60% of qualification	
<ul style="list-style-type: none"> • Section A (30%) – Reading • Section B (30%) – Writing 	
Component 3: Spoken Language Non-exam assessment: Unweighted	
<ul style="list-style-type: none"> • One presentation/speech, including responses to questions and feedback 	

GCSE	CORE
HOW WILL I BE ASSESSED?	
Component 1: Shakespeare and Poetry Written examination – 2 hours - 40% of qualification	
<ul style="list-style-type: none"> • Section A - (20%) Shakespeare • Section B - (20%) Poetry from 1789 to present day 	
Component 2: Post-1914 Prose/Drama, Century Prose and Unseen Poetry Written examination – 2 hours and 30 minutes - 60% of qualification	
<ul style="list-style-type: none"> • Section A - (20%) Post-1914 prose/drama • Section B - (20%) 19th century prose • Section C - (20%) Unseen poetry from the 20th/21st century. 	

WHAT DOES THE COURSE OFFER ME?

GCSE English Literature develops critical thinking skills that will carry you through life beyond...

- Clearly structured papers which allow candidates to show what they know, understand and can do including opportunities for close analysis of texts and opportunities for extended writing.
- Questions that are designed to promote accessibility within an untiered qualification and allow all candidates a chance to succeed.
- A wide choice of novels and plays, from Shakespeare to contemporary fiction that give centres a great deal of flexibility when they are choosing texts to be studied.
- An exciting poetry anthology that covers poetry from 1789, including Romantic poetry, and includes some of Britain's best-loved poems alongside some less well-known works.
- Thematically-linked unseen poetry which draws on long experience of accessible but differentiating assessment of this kind.
- A skills-based approach which allows for a breadth of study and flexible teaching, and offers excellent co-teachability with GCSE English Language.

WHAT DOES THE COURSE INVOLVE?

The GCSE in English Literature will help students develop the skills, knowledge and understanding they will need for further study and to take a general pleasure in reading.

SKILLS INVOLVED



BEYOND GCSE

English Language is a core subject in the National Curriculum. It can, therefore, be studied at a higher level as a subject in its own right. The school offers extremely popular courses in A-level English Literature and English Language A-level.

A qualification in English continues to be demanded in all walks of life, and skills acquired in this subject can be put to positive use in almost all areas of employment.

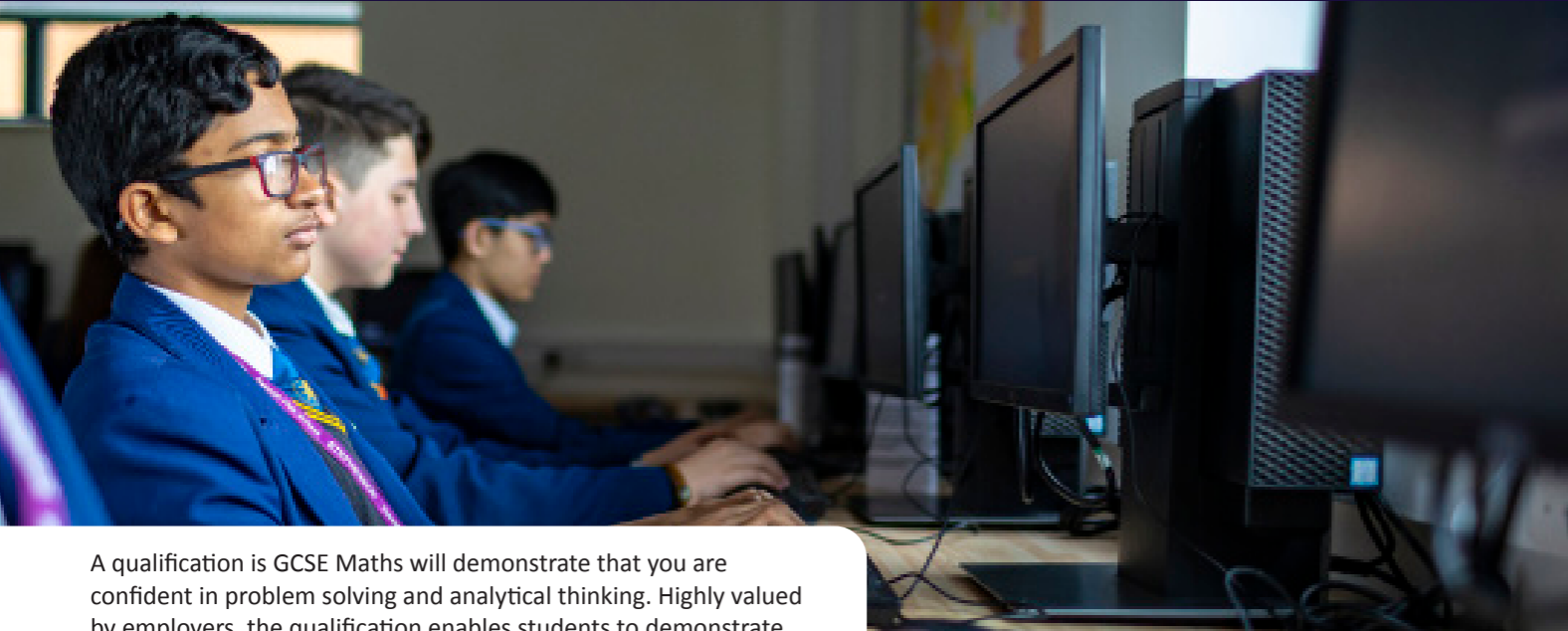
BEYOND GCSE

English Literature is a core subject in the National Curriculum. It can, therefore, be studied at a higher level as a subject in its own right. The school offers an extremely popular course in A-level English Literature.

This qualification is highly valued by Higher Education institutions and employers alike and skills acquired in this subject can be put to positive use in most areas of employment.

SKILLS INVOLVED





A qualification in GCSE Maths will demonstrate that you are confident in problem solving and analytical thinking. Highly valued by employers, the qualification enables students to demonstrate their skills of logic, reasoning and finding solutions.

WHAT DOES THE COURSE OFFER ME?

The study of GCSE Mathematics should enable students to:

- Develop fluent knowledge, skills and understanding of mathematical methods and concepts.
- Acquire, select and apply mathematical techniques to solve problems.
- Reason mathematically, make deductions and inferences and draw conclusions.
- Comprehend, interpret and communicate mathematical information in a variety of forms.

WHAT DOES THE COURSE INVOLVE?

Mathematics will be taught over nine one-hour periods per fortnight in Years 9 to 11. The course is organised into six broad topic areas: number, algebra, probability, ratio, geometry, probability and statistics. Problem-solving and a deep understanding of mathematics underpin the new demands of this new specification. To maximise success we ask that all students must be equipped with a protractor, a scientific calculator and a

GCSE	CORE
HOW WILL I BE ASSESSED?	
Examination (100%)	
Paper 1 – Non-calculator (80 marks) 1h 30 mins	
Paper 2 – Calculator (80 marks) 1h 30 mins	
Paper 3 – Calculator (80 marks) 1h 30 mins	
All papers carry an equal weighting for the final grade	
Foundation Tier Grade 1-5 available	
Higher tier Grade 4-9 available	
Further Mathematics and Core Maths are different options to study in the Sixth Form.	



Trilogy Science offers two GCSEs that demonstrate how adept you are at analysing the world around us... and beyond.

WHAT DOES THE COURSE OFFER ME?

- The opportunity to study a core subject in the National Curriculum.
- Knowledge and understanding of the world.
- A combination of a practical and academic subject.

A qualification in Science continues to be highly desirable to employers and is part of the English Baccalaureate qualification that universities and employers now consider to be an important indicator of a fully rounded student.

WHAT DOES THE COURSE INVOLVE?

Biology – Study of human biology, organisms, evolution and the environment.

Chemistry – Study of the nature of substances and how they react together, how chemistry is used in business and industry, and how our use of fuels affect the local and global environment.

Physics – Study of the use and transfer of energy, as well as an insight into the nature of waves, radiation and space. They will also learn about the application of physics in the real world they live in.

SKILLS INVOLVED



BEYOND GCSE

Mathematics underpins the global economy at every level so A-levels and courses in Higher Education have become increasingly mathematical, often due to an increased emphasis on using statistics. Students studying a wide range of subjects from engineering to psychology require some level of mathematics if they are to succeed on their chosen course. A-level Mathematics.

BEYOND GCSE

GCSE Trilogy Science gives students a good knowledge of science and provides a firm foundation for further study at A-level and Level 3 BTEC which can be studied in the Sixth Form.

Continue to:
A-level Sciences (you must achieve an equivalent 6:6 grade minimum)
Careers in Science based subjects including: Engineering, Medicine, Nursing and Veterinary Science.

SKILLS INVOLVED





WHAT DOES THE COURSE OFFER ME?

Animal Care offers you an excellent basis in understanding how to care for domestic animals, including small mammals, reptiles, livestock and birds. You will learn how to keep them healthy including feeding, grooming and enrichment. You will learn about different animal enclosures, animal health and the transmission and treatment of common diseases. You will also learn about the factors that can influence an animal's behaviour and when it is safe to handle and restrain an animal.

WHAT DOES THE COURSE INVOLVE?

- Component 1** - Animal Handling
- Component 2** - Animal Housing and Accommodation
- Component 3** - Animal Health and Welfare

TECH AWARD

OPTION

HOW WILL I BE ASSESSED?

Written examination (40%) - Animal Health and Welfare.

Internal coursework (60%) - Animal Handling; Animal Housing and Accommodation.

There are 3 components in total. 1 will be assessed with a written exam paper, whilst the other two are assessed with written coursework that you will complete in lessons. As part of the coursework, you will be required to video yourself handling different animals and preparing and cleaning different animal enclosures.

GCSE

OPTION

HOW WILL I BE ASSESSED?

Examination (100%)

Students will complete exams at the end of the course.

There are three exams:

- Physical geography.
- Human challenges.
- Geographical application (skills paper to replace the coursework element).

What causes earthquakes? Why does the population shift in some countries? How does the river system work? If these are the questions that interest you, you will find GCSE Geography an interesting and engaging qualification to study.

WHAT DOES THE COURSE OFFER ME?

The GCSE Geography course aims to stimulate pupils' interest in Geography, develop a sense of place and an appreciation for the environment and help them to act in an informed and responsible way. Students acquire knowledge and understanding of a range of places, environments and geographical patterns and develop their understanding of the physical and human processes, including decision-making, which affects their development.

WHAT DOES THE COURSE INVOLVE?

Over the two-year course, pupils will study a number of topics based around both physical and human geography. The GCSE specification is divided into some interrelated themes which are studied on local, national and global scales. Physical Topics studied will include coasts and coastal management, ecosystems, rivers, weather and climate (hurricanes) and plate tectonics (Earthquakes and Volcanoes). Human Topics explored will include changing urban areas, development, resources and population. During the course you will also be invited on two local field trips to collect data for the skills exam gaining an understanding of geography in the real world.

SKILLS INVOLVED

- EXTENDED WRITING**
- WORKING WITH MY HANDS**
- USING NUMBERS**
- PERFORMING ACTIVITIES**
- DESIGN & CREATE PROJECT**
- USING ICT (NOT GAMING)**
- DESIGN & CREATE PROJECT**
- SPEAKING IN FRONT OF OTHERS**

BEYOND GCSE

Students who study Tech Award Animal Care often go on to study L2 and L3 Animal Care at Sixth Form College. This is where you can learn more detail and more examples of caring for animals, as well as complete practical work placements with a variety of species. For some students this can lead to Higher Education courses working with animals.

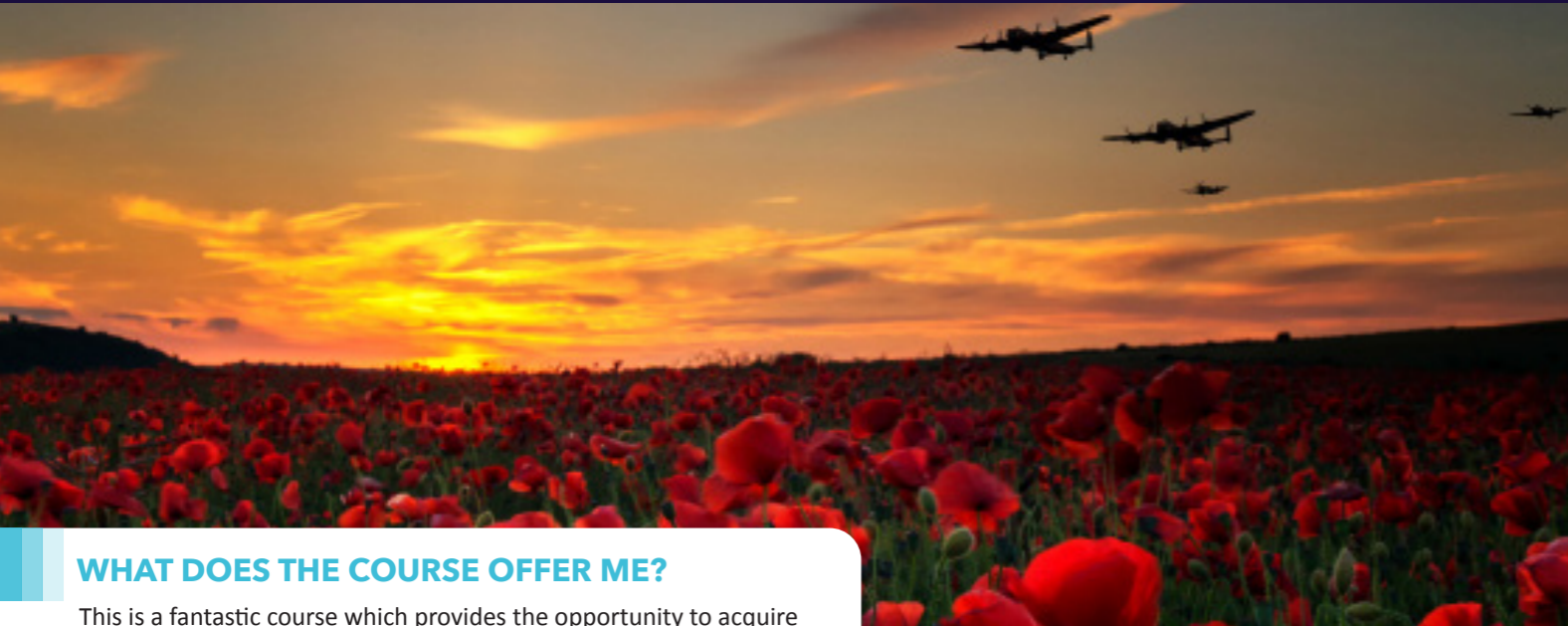
Students who study Animal Care can pursue work in industries such as rescue shelters, veterinary science, farming or animal training.

BEYOND GCSE

Employers and universities value geography for the generic skills it teaches students. Employers are looking for people who can make good decisions, solve problems and look at issues from more than one angle. These skills are at the centre of this course. GCSE Geography is an excellent foundation for A-level Geography. It also involves a lot of skills that are of value across modules and other subjects. Geography is considered as both a Science and a Humanities subject and therefore leads to a wide range of careers. As an A-level it gives access to most degree subjects.

SKILLS INVOLVED

- EXTENDED WRITING**
- WORKING WITH MY HANDS**
- USING NUMBERS**
- PERFORMING ACTIVITIES**
- DESIGN & CREATE PROJECT**
- USING ICT (NOT GAMING)**
- DESIGN & CREATE PROJECT**
- SPEAKING IN FRONT OF OTHERS**



WHAT DOES THE COURSE OFFER ME?

This is a fantastic course which provides the opportunity to acquire a wealth of interesting subject knowledge. Studying History at GCSE level offers a range of important skills including:

- Learning how to recognise bias, not only in historical sources but also in the media and the world around you.
- Compiling reports and learning how to communicate and convey information clearly and effectively.

GCSE History students have had the chance to take part in educational visits which have included the World War One Battlefields, Berlin, and the Thackray Museum of Medicine in Leeds.

WHAT DOES THE COURSE INVOLVE?

GCSE History begins with studying Germany c1890-1945. This includes analysing the reign of Kaiser Wilhelm II and the impact of the First World War on Germany. The course looks at the struggles of Germany after the war followed by the recovery under Stresemann, and then how Hitler rose to power in Germany in 1933 following the Great Depression. The second part of Year 10 involves studying the Cold War in the years 1945-1972. This covers key events such as the Berlin Blockade and the Cuban Missile Crisis. There is a trip planned for the current Year 10 GCSE History students to visit Berlin at the end of this year which will link to both units of study. In Year 11 you will study Health and Medicine from c1000 to the present day. This unit looks at the development of medicine over time and key changes which still have an influence over health today. For the final unit, students study the reign of Elizabeth I. This includes examining key events such as the Spanish Armada as well as how ordinary people in England were affected by her policies.

GCSE	OPTION
<p>HOW WILL I BE ASSESSED?</p> <p>Examination (100%)</p> <p>Paper 1:</p> <ul style="list-style-type: none"> • Written exam: 2 Hours • 84 marks (including 4 marks for spelling, punctuation and grammar) • 50% of GCSE <p>Paper 2:</p> <ul style="list-style-type: none"> • Written exam: 2 Hours • 84 marks (including 4 marks for spelling, punctuation and grammar) • 50% of GCSE 	

SKILLS INVOLVED

- EXTENDED WRITING
- WORKING WITH MY HANDS
- USING NUMBERS
- PERFORMING ACTIVITIES
- DESIGN & CREATE PROJECT
- USING ICT (NOT GAMING)
- DESIGN & CREATE PROJECT
- SPEAKING IN FRONT OF OTHERS

BEYOND GCSE

History GCSE is an excellent foundation for A-level History. It is an academic subject that is highly respected at colleges, universities and with employers leading to careers in media, journalism, the police, the armed forces, accountancy, administration, law, teaching, politics and banking.

WHAT DOES THE COURSE OFFER ME?

In GCSE Religious Studies, you will:

- Understand beliefs of two major religions
- Explore non-religious perspectives
- Investigate ultimate questions
- Analyse contemporary ethical issues
- Develop critical thinking and writing skills

WHAT DOES THE COURSE INVOLVE?

EDUQAS GCSE Religious Studies (Route A) includes:

Component 1: Philosophical themes

This Component provides you with the opportunity to study four Philosophical themes:

- Issues of Relationships
- Issues Life and Death
- Issues of Good and Evil
- Issues of Human Rights

Component 2: Study of Christianity

This component offers an in-depth study of Christianity, covering its beliefs, teachings, practices, and their impact on communities and believers.

Component 3: Study of Islam

This component offers an in-depth study of Islam as a world religion, covering its beliefs, teachings, practices, and their impact on Muslim

GCSE	OPTION
<p>HOW WILL I BE ASSESSED?</p> <p>You will complete three exams:</p> <p>Component 1: 2 hours = 50%</p> <p>Component 2: 1 hour = 25%</p> <p>Component 3: 1 hour = 25%</p>	

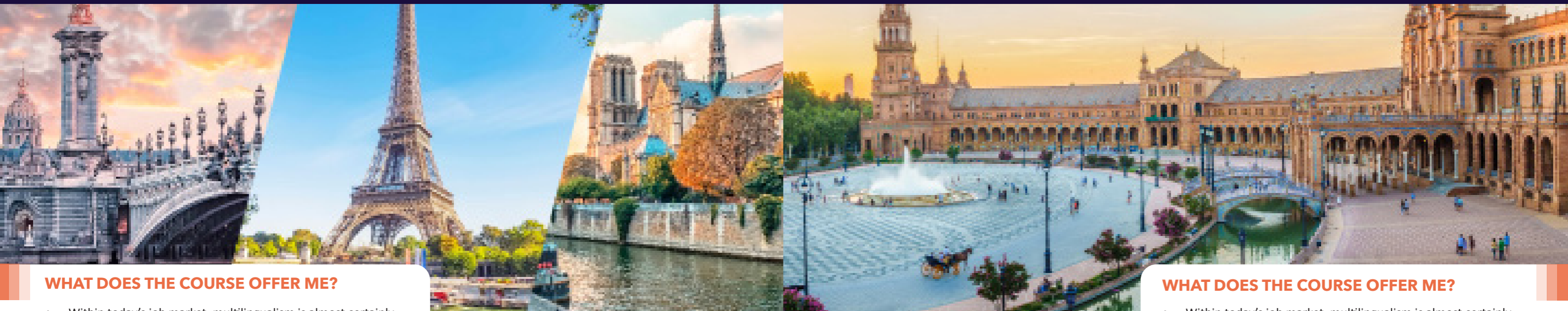
BEYOND GCSE

After GCSE, you can continue studying Philosophy and Ethics at A-level in the Sixth Form. The transferable skills gained from Religious Studies are highly valued by employers, including:

- Understanding the functioning of multi-faith, multicultural, and secular societies.
- Respecting diverse beliefs and teachings.
- Engaging in respectful debates while maintaining personal convictions.
- Communicating clearly and effectively in discussions and written work.
- Constructing well-informed and reasoned arguments.
- Using critical thinking skills to analyse norms and media output.

SKILLS INVOLVED

- EXTENDED WRITING
- WORKING WITH MY HANDS
- USING NUMBERS
- PERFORMING ACTIVITIES
- DESIGN & CREATE PROJECT
- USING ICT (NOT GAMING)
- DESIGN & CREATE PROJECT
- SPEAKING IN FRONT OF OTHERS



WHAT DOES THE COURSE OFFER ME?

- Within today's job market, multilingualism is almost certainly a necessity. France, French Canada and some countries in Africa are among Britain's major trading partners as well as being popular tourist destinations.
- The course will enable you to develop the verbal and written communication skills in the languages of these countries, as well as providing you with greater cultural understanding.

WHAT DOES THE COURSE INVOLVE?

GCSE builds on what you have already been studying throughout Years 7, 8 & 9. You will develop listening, reading, speaking and writing skills by learning about three broad themes: your identity and culture; your town, holidays and international issues; and the school and ambitions for the future.

You will have to learn words each week and get your head around some new ideas, but being able to speak a foreign language is an incredibly respected skill to have and opens up all the jobs you could have in the UK in a variety of different countries. In a recent poll, 60% of people surveyed said that if they could go back to school to study anything, it would be language. People who speak more than one language develop listening skills, are proven to have better empathy skills and make friends more easily.

You will also be given the opportunity to go on a trip to the country or countries whose language you are studying.

GCSE	OPTION
HOW WILL I BE ASSESSED?	
Listening (25%);	
Speaking (25%)	
Reading (25%)	
Writing (25%)	
All examinations are sat as terminal examinations at the end of the course;	
All examinations (including speaking) are internally conducted but externally assessed.	

GCSE	OPTION
HOW WILL I BE ASSESSED?	
Listening (25%)	
Speaking (25%)	
Reading (25%) Including translation from Spanish;	
Writing (25%) Including translation into Spanish;	
All examinations are sat as terminal examinations at the end of the course;	
All examinations (including speaking) are internally conducted but externally assessed.	

WHAT DOES THE COURSE OFFER ME?

- Within today's job market, multilingualism is almost certainly a necessity. Spain and Latin America are among Britain's major trading partners as well as being popular tourist destinations.
- This new course will enable you to develop your verbal and written communication skills in Spanish, as well as providing you with greater cultural understanding through authentic Spanish stimuli and literature.

WHAT DOES THE COURSE INVOLVE?

GCSE expands on earlier studies from Years 7 to 9, focusing on enhancing listening, reading, speaking, and writing skills across three themes: identity and culture; local area, holidays, and global issues; and school and future ambitions.

Weekly vocabulary learning and embracing new concepts are part of the course. Mastery of a foreign language is highly valued, opening career opportunities worldwide. Surveys show a high interest in language learning for its benefits, including improved listening, empathy, and social skills.

The course includes a trip to countries relevant to the studied language.

SKILLS INVOLVED

- EXTENDED WRITING
- WORKING WITH MY HANDS
- USING NUMBERS
- PERFORMING ACTIVITIES
- DESIGN & CREATE PROJECT
- USING ICT (NOT GAMING)
- DESIGN & CREATE PROJECT
- SPEAKING IN FRONT OF OTHERS

BEYOND GCSE

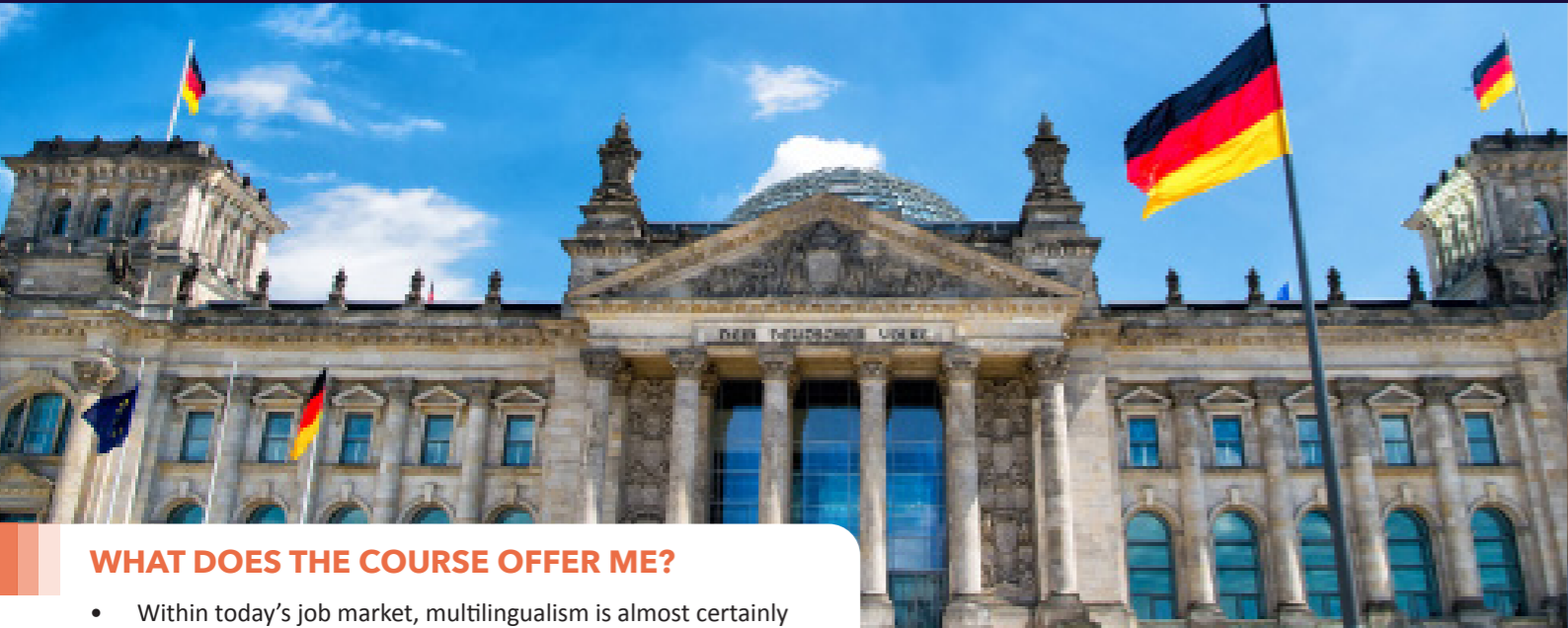
After GCSE you can continue your language studies in the Sixth Form. Universities offer a wide range of language courses, often in combination with other disciplines, such as Enterprise, law, economics, etc. A knowledge of a foreign language is highly valued by employers both as a practical skill and as evidence of higher order thinking skills.

BEYOND GCSE

After GCSE you can continue your language studies in the Sixth Form. Universities offer a wide range of language courses, often in combination with other disciplines, such as Enterprise, law, economics etc. A knowledge of a foreign language is highly valued by employers both as a practical skill and as evidence of higher order thinking skills.

SKILLS INVOLVED

- EXTENDED WRITING
- WORKING WITH MY HANDS
- USING NUMBERS
- PERFORMING ACTIVITIES
- DESIGN & CREATE PROJECT
- USING ICT (NOT GAMING)
- DESIGN & CREATE PROJECT
- SPEAKING IN FRONT OF OTHERS



WHAT DOES THE COURSE OFFER ME?

- Within today's job market, multilingualism is almost certainly a necessity. Germany, Austria and Switzerland are among Britain's major trading partners as well as being popular tourist destinations.
- The course will enable you to develop the verbal and written communication skills in the languages of these countries, as well as providing you with greater cultural understanding.

WHAT DOES THE COURSE INVOLVE?

GCSE builds on what you have already been studying throughout Years 7, 8 & 9. You will develop listening, reading, speaking and writing skills by learning about three broad themes: your identity and culture; your town, holidays and international issues; and the school and ambitions for the future.

You will have to learn words each week and get your head around some new ideas, but being able to speak a foreign language is an incredibly respected skill to have and opens up all the jobs you could have in the UK in a variety of different countries. In a recent poll, 60% of people surveyed said that if they could go back to school to study anything, it would be language. People who speak more than one language develop listening skills, are proven to have better empathy skills and make friends more easily.

You will also be given the opportunity to go on a trip to the country or countries whose language you are studying.

GCSE	OPTION
HOW WILL I BE ASSESSED?	
Listening (25%);	
Speaking (25%)	
Reading (25%)	
Writing (25%)	
All examinations are sat as terminal examinations at the end of the course;	
All examinations (including speaking) are internally conducted but externally assessed.	

GCSE	OPTION
HOW WILL I BE ASSESSED?	
Component 1: Computer Systems	
50% of final grade	
Externally Assessed (Written Exam)	
Component 2: Computational Thinking, Algorithms and Programming	
50% of final grade	
Externally Assessed (Written Exam)	
Practical Programming	
Students are to be given the opportunity to undertake a programming task(s) during their course of study which allows them to develop their skills to design, write, test and refine programs using a high-level programming language. Students will be assessed on these skills during the written examinations.	

WHAT DOES THE COURSE OFFER ME?

Computer Science will develop your knowledge, understanding and practical skills that would be used in many different computing careers. This qualification will encourage you to:

- Understand and apply fundamental principles and concepts of CS such as abstraction, decomposition, logic, algorithms and data representation.
- Analyse problems and think creatively, innovatively, analytically and logically.
- Understand the components that make up digital system
- Apply mathematical skills relevant to Computer Science.

Please note much of the fundamentals of the course are rooted in Maths, therefore students require strong ability in Maths.

WHAT DOES THE COURSE INVOLVE?

Component 1: Computer Systems
Introduces students to the central processing unit (CPU), computer memory and storage, data representation, wired and wireless networks, network topologies, system security and system software. It also looks at ethical, legal, cultural and environmental concerns associated with computer science.

Component 2: Computational Thinking, Algorithms and Programming
Students apply knowledge and understanding gained in component 01. They develop skills and understanding in computational thinking: algorithms, programming techniques, producing robust programs, computational logic and translators.

SKILLS INVOLVED

- EXTENDED WRITING
- WORKING WITH MY HANDS
- USING NUMBERS
- PERFORMING ACTIVITIES
- DESIGN & CREATE PROJECT
- USING ICT (NOT GAMING)
- DESIGN & CREATE PROJECT
- SPEAKING IN FRONT OF OTHERS

BEYOND GCSE

After GCSE you can continue your language studies in the Sixth Form. Universities offer a wide range of language courses, often in combination with other disciplines, such as Enterprise, law, economics, etc. A knowledge of a foreign language is highly valued by employers both as a practical skill and as evidence of higher order thinking skills.

BEYOND GCSE

Studying Computer Science empowers you to solve complex, challenging problems, enabling you to make a positive difference in the world. Computing jobs often come with high salaries. Computing skills are essential in a wide range of professions, from astronomy to financial analysis – not just in IT related jobs!

SKILLS INVOLVED

- EXTENDED WRITING
- WORKING WITH MY HANDS
- USING NUMBERS
- PERFORMING ACTIVITIES
- DESIGN & CREATE PROJECT
- USING ICT (NOT GAMING)
- DESIGN & CREATE PROJECT
- SPEAKING IN FRONT OF OTHERS



WHAT DOES THE COURSE OFFER ME?

The IT course offers:

- Understanding and application of fundamental IT principles, including digital world usage, data manipulation, and Augmented Reality.
- Effective use of IT for various purposes and audiences.
- Practical skills for real-life and work situations.
- Enhanced creative, analytical, and critical thinking.
- Independence and confidence in relevant IT skills.
- Planning, designing, testing, and evaluating IT solutions.
- Awareness of digital technology impacts on individuals, organisations, and society.
- No programming involved, making it ideal for those seeking a computer-related qualification without complex coding.

WHAT DOES THE COURSE INVOLVE?

In the Cambridge National IT course, students cover three key units:

- R050:** IT in the digital world, exploring the presence of IT, its benefits and risks. Topics include design tools, IoT, and cyber-security.
- R060:** Data manipulation with spreadsheets, creating a dashboard for clients. For instance, students developing a system for a swim centre.
- R070:** Augmented reality for presenting information, focusing on creating AR models to meet client needs. For example, students

TECH AWARD

OPTION

HOW WILL I BE ASSESSED?

Cambridge National in Information Technologies

R050: IT in the digital world. 40% of final grade. 1 Hour 45 minute exam.

R060: Data manipulation using spreadsheets. 30% of final grade. Controlled assessment - internally assessed, externally moderated.

R070: Using augmented reality to present information. 30% of final grade. Controlled assessment - internally assessed, externally moderated. This is worth 30% of your overall mark.

TECH AWARD

OPTION

HOW WILL I BE ASSESSED?

Unit R093: Creative iMedia in the media industry
40% of final grade
Externally assessed written exam

Unit R094: Visual Identity and Digital Graphics
30% of final grade
Internally assessed
Externally moderated

Optional Unit one of either:

- Characters and Comics
- Digital Games

30% of final grade
Internally assessed
Externally moderated

WHAT DOES THE COURSE OFFER ME?

Creative iMedia will develop your knowledge, understanding and practical skills that would be used in the media industry. You may be interested in this if you want an engaging qualification where you will use your learning in practical, real-life situations, such as:

- Developing visual identities for clients.
- Planning and creating original digital graphics.
- Planning, creating and reviewing original digital media products.

WHAT DOES THE COURSE INVOLVE?

Unit R093: Creative iMedia in the media industry (Exam)
In this unit you will learn about the media industry, digital media products, how they are planned, and the media codes which are used to convey meaning, create impact and engage audiences.

Unit R094: Visual identity and digital graphics (NEA)
This is assessed by completing a set assignment.
In this unit you will learn to how to develop visual identities for clients and use the concepts of graphic design to create original digital graphics to engage target audiences.

You will then have the option to complete an NEA on either characters and comics, or digital games.

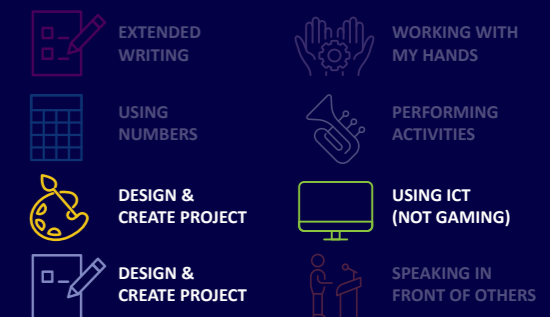
SKILLS INVOLVED



BEYOND GCSE

Skills acquired through ICT will support entry into work or progressions to further studies through further education. A qualification in ICT is still demanded by many employers and colleges, and the practical nature of ICT demonstrates an ability to use ICT rather than just understand it.

SKILLS INVOLVED





WHAT DOES THE COURSE OFFER ME?

You will study the following 3 units:

- Exploring Music Products and Styles
- Music Skills Development
- Responding to a Music Brief

There will be opportunities to perform in termly concerts as well as other extracurricular performances that occur throughout the year.

WHAT DOES THE COURSE INVOLVE?

Component 1:

You will learn about many musical genres from different eras and different cultures. Most students will choose the path of Performance and will take part in termly school concerts. Others may choose the path of Composition or Production. All three paths allow you to fully engage with different musical styles.

Component 2:

You will assess your own abilities as a musician and aim to develop your weaknesses through group workshops and independent practice.

Component 3:

You will create a cover version of an existing song in a new style. You will use your knowledge of genres and their inherent musical characteristics to create a fresh version of a famous song.

BTEC TECH AWARD

OPTION

HOW WILL I BE ASSESSED?

Internal assessment

Components 1 and 2 are assessed through internal assessment. This style of assessment promotes deep learning through ensuring the connection between knowledge and practice.

Synoptic external assessment

Component 3 builds directly on components 1 and 2 and enables learning to be brought together and related to a real-life situation. The external assessment takes the form of a set task taken under supervised conditions that are then marked and awarded a grade by Pearson.

Components 1 and 2 make up 30% each of the total qualification, whereas component 3 makes up the remaining 40%.

GCSE

OPTION

HOW WILL I BE ASSESSED?

When addressing the requirements of the new 'written element', students must record their ideas, observations and insights both visually and through written annotation using a sketchbook / visual journal, as work progresses. Annotation must be explicitly evidenced in both coursework and exam work.

Coursework (60%)

In Year 10 pupils learn to explore a range of various design and multimedia techniques to create experimental graphic design. Throughout year 10, pupils choose to explore a personal investigation on a chosen topic / theme and create a portfolio of design work.

Examination (40%)

One examination worth 40% of the marks is set by the exam board. This exam comes with around 12 week preparation time and a 10 hour practical exam.

WHAT DOES THE COURSE OFFER ME?

- The aims of this course are to develop a range of drawing and digital skills that translate from initial design ideas right through to computer realisations.
- Students will learn how to successfully use sophisticated industry standard software such as Adobe Photoshop, Illustrator and InDesign.
- Students will be given opportunities to work on real design brief situations, following all steps in the design process from idea concepts to final completed outcomes.
- Alongside the technical aspect of the course, students will also investigate and learn to contextually understand the works of key designers, under standing how they communicate their meaning visually.
- Pupils will work in a highly creative and stimulating environment, learning from innovating schemes of work that help facilitate accelerated creativity and progression within the Arts.

WHAT DOES THE COURSE INVOLVE?

The Graphic design course is based around creating initial drawings/ideas - developing and experimenting and creating final images with the help of Adobe CS6.

Topics include – Typography / Digital Manipulation / Poster Design / Advertising / Brand Identity / Logo Design / Digital Drawing / Vector Creations.

SKILLS INVOLVED

EXTENDED WRITING
 WORKING WITH MY HANDS
 USING NUMBERS
 PERFORMING ACTIVITIES
 DESIGN & CREATE PROJECT
 USING ICT (NOT GAMING)
 DESIGN & CREATE PROJECT
 SPEAKING IN FRONT OF OTHERS

BEYOND GCSE

Music qualifications are highly regarded by colleges of further education and employers alike as musicians are trained to work methodically and to be self-disciplined. You may wish to use GCSE Music as a basis for further study such as A-level Music or a BTEC course based on Performing Arts.

You may wish to use it as a springboard into other related areas such as Music Technology.

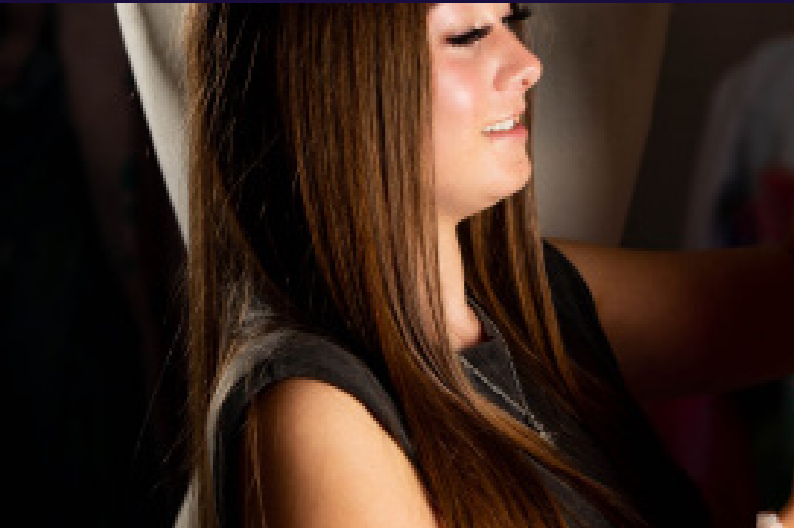
BEYOND GCSE

All art endorsements are available to study at A-level within the Sixth Form. Furthermore - 100% of all Sixth Form Art students who applied for a University degree course over the past seven years have achieved their first choice place.

The creative industry is always one of largest growing industry sectors in Britain. A Graphics Design qualification will help you to develop a career in the following sectors: Graphic Design, Illustration, Copywriting, Advertising, Creative Direction, Art Direction, Set Design, Web Design, Architect, Interior design.

SKILLS INVOLVED

EXTENDED WRITING
 WORKING WITH MY HANDS
 USING NUMBERS
 PERFORMING ACTIVITIES
 DESIGN & CREATE PROJECT
 USING ICT (NOT GAMING)
 DESIGN & CREATE PROJECT
 SPEAKING IN FRONT OF OTHERS



WHAT DOES THE COURSE OFFER ME?

- This course is an opportunity for students to gain experience in wide range of innovative practices related to textiles craft, design and construction inspired by contemporary art and fashion.
- Students will learn how to successfully develop skills in a wide variety of techniques and media ranging from paper construction and corsetry to sculpture and costume design.
- Students will be given opportunities to produce unique and highly individual textiles solutions based on their own research.
- Alongside the technical aspect of the course, students will also investigate and learn to understand the works of key fashion designers informing critical understanding of Art Textiles.
- Pupils will work in a highly creative and stimulating environment, learning from innovating schemes of work that help facilitate accelerated creativity and progression within the Arts.

WHAT DOES THE COURSE INVOLVE?

The Art Textiles course is based around learning a variety of textiles design & techniques.

Topics include Felt Making / Weaving / Embroidery / Textile Construction and Sculpture / Paper Manipulation / Artist Research / Experimental Workshops / Clay modelling / Adobe digital work.

SKILLS INVOLVED

- EXTENDED WRITING
- WORKING WITH MY HANDS
- USING NUMBERS
- PERFORMING ACTIVITIES
- DESIGN & CREATE PROJECT
- USING ICT (NOT GAMING)
- DESIGN & CREATE PROJECT
- SPEAKING IN FRONT OF OTHERS

BEYOND GCSE

All art endorsements are available to study at A-level within the Sixth Form. Furthermore - 100% of all Sixth Form Art students who applied for a University degree course over the past eight years have achieved their first choice place.

The creative industry is always one of largest growing industry sectors in Britain. A qualification in Art Textiles will help you to achieve a career in the following sectors: Fashion Design, Fashion Illustration, Clothes Design, Interior Design, Visual Merchandise, Art Direction, Set Design, Fashion Buyer, Jewellery & Accessory Design.



WHAT DOES THE COURSE OFFER ME?

- This aims of the course are to develop greater control and understanding of both point & shoot and Digital SLR camera technologies.
- Students will learn how to develop a clear understanding of how photographs can be viewed to communicate and express their vision or understanding of the world.
- Throughout the duration of the course, pupils will learn how to edit images using various computer software such as Adobe CS6 and Adobe Lightroom.
- Underpinning the course is a rich and solid investigative approach to photographic history, critical understanding and emerging technologies in photography.
- Pupils will work in a highly creative and stimulating environment, learning from innovating schemes of work that help facilitate accelerated creativity and progression within the Arts.

WHAT DOES THE COURSE INVOLVE?

GCSE photography is built upon the fundamental key skills involved with digital camera technologies. Allowing students to explore a variety of diverse projects on topics that cover: Studio Photography / Fashion Photography / Advertising / Experimental Photography / Landscape & Urbanscape photography.

GCSE OPTION

HOW WILL I BE ASSESSED?

Coursework (60%)

In Year 10 pupils learn to explore a range of various Photographic techniques exploring the formal elements of photographic practice. Throughout year 10, students choose to explore two personal investigations on a chosen topic/theme to create a portfolio of work.

Examination (40%)

One examination worth 40% of the marks set by the exam board. This exam comes with at least 12 week preparation time and a 10-hour practical exam.

BEYOND GCSE

All art endorsements are available to study at A-level within the Sixth Form. Furthermore - 100% of all Sixth Form Art students who applied for a University degree course over the past eight years have achieved their first choice place.

The creative industry is always one of largest growing industry sectors in Britain. A qualification in Photography will help you to achieve a career in the following sectors: Fashion Photography, Sports Photography, Movie Photography, Band Photographer, Magazine Photography, Journalist, Paparazzi, Forensic Photography.

SKILLS INVOLVED

- EXTENDED WRITING
- WORKING WITH MY HANDS
- USING NUMBERS
- PERFORMING ACTIVITIES
- DESIGN & CREATE PROJECT
- USING ICT (NOT GAMING)
- DESIGN & CREATE PROJECT
- SPEAKING IN FRONT OF OTHERS



WHAT DOES THE COURSE OFFER ME?

This course has been designed to allow learners to develop the understanding and skills related to a range of job roles in construction with an emphasis on maintaining the built environment. The units provide an overview of the activities of different job roles and how they work together to maintain the built environment. Each unit has been designed so that knowledge, skills and understanding are developed through tasks that have many of the characteristics of real work in construction. Each unit has an applied purpose which acts as a focus for the learning in the unit. This approach is called applied learning and enables learners to learn in such a way that they develop.

WHAT DOES THE COURSE INVOLVE?

The qualification has been devised around the concept of a 'plan, do, review' approach to learning, where learners are introduced to a context for learning, review previous learning to plan activities, carry out activities and review outcomes and learning. This approach mirrors many work-related activities in construction and also provides for learning in a range of contexts from urban to rural environments in mainly small scale construction projects which have appreciation of work involved in the planning and maintaining the built environment and wider opportunities for progression into further education, employment or training a community focus. As such, the qualification provides learners with a broad .

TECH AWARD	OPTION
<p>HOW WILL I BE ASSESSED?</p> <p>Coursework (70%) Examination (30%)</p> <p>Over the course of three years you will undertake three units of which two are assessed internally by your teacher and one of these units will be a paper based health and safety examination that will be externally assessed.</p> <p>The overall mark is determined on completion of two major practical units which explore, brickwork, joinery, tiling and other key construction skills – These two units make up 70% of your overall mark. Construction Technology (examination).</p> <p>The one remaining external exam is based on Health and Safety in the construction environment.</p>	



GCSE	OPTION
<p>HOW WILL I BE ASSESSED?</p> <p>Examination (50%) Coursework (50%)</p> <p>This will assess core and specialist technical principles as well as design and making principles. The exam includes a mixture of multiple choice, short and extended response questions.</p> <p>This is a substantial design and make task where students will work to a design brief and specification generating, developing then realising design ideas. Students will produce a prototype and a portfolio of evidence.</p>	

If your skills lie in creating products and you have a passion for creating products from concepts to completion GCSE Product Design may interest you.

WHAT DOES THE COURSE OFFER ME?

Product Design involves creating products with materials like wood, metals, and plastics, encouraging the use of new technologies.

Creativity: This course inspires and challenges students, offering insights into manufacturing and engineering sectors.

Preparation: It equips learners for informed decisions about further education and careers.

Independent learning: The course enhances decision-making, creativity, and critical analysis skills, promoting both individual and collaborative work.

WHAT DOES THE COURSE INVOLVE?

Students must create a portfolio with up to twenty A3 pages, then craft models from their designs using resistant materials, hand tools, and computer-aided manufacturing (CAM). Coursework is followed by a written exam.

The assessment includes a design-and-make task from set options, featuring a final product and a concise design folder with ICT evidence. Students should document their process with photographs of the product at various stages and the final outcome.

SKILLS INVOLVED



BEYOND GCSE

There are many routes to the different careers within the Construction industry. However, there are three main tiers of careers based on educational background which are most common: Unskilled and Semi-Skilled – general site labour with some knowledge and construction qualifications.

Skilled - on-site managers whom possess extensive knowledge and experience in their craft or profession.

Technical and Management – personnel with the greatest educational qualifications, usually graduate degrees, trained to design, manage and instruct the construction process.

BEYOND GCSE

A-level Design Technology allows students to build on the knowledge gained at GCSE. Students can choose to design their own products and ultimately make them out of almost any hard or modern material. The use of modern manufacturing equipment such as laser cutters, milling machines and 3D printers are used to realise designs.

A wide range of career opportunities exist within Design Technology such as: marketing, designing products, packaging design, media, manufacturing and many more.

SKILLS INVOLVED





Food and the fascinating process by which it arrives to the plate in front of you is what is studied in GCSE Food and Nutrition.

WHAT DOES THE COURSE OFFER ME?

- It covers where food comes from and the importance of eating healthily.
- It will give students a real understand of food and nutrition
- Hands on experience of developing practical cookery skills combined with practical tips on presenting dishes.
- The preparation of British and international dishes.
- It will encourage students to develop their own recipes.
- It covers the essentials of food science - the underlying science behind the cooking process.

WHAT DOES THE COURSE INVOLVE?

This course will build on areas students studied in years 7, 8 & 9. In it students will study six main areas:

- Food commodities
- Principles of nutrition
- Diet and good health
- The science of food
- Where food comes from
- Cooking and food preparation

The qualification will give students in-depth knowledge of nutrition, where food comes from, food choice, food science and practical cooking as well as the ability to apply this knowledge while cooking.

GCSE	OPTION
HOW WILL I BE ASSESSED?	
Examination (50%) One 1 hour 45 minute examination paper. This consists of two sections both containing compulsory questions.	
Section A: Questions based on stimulus material	
Section B: Structured, short and extended response questions to assess course content.	
Controlled Assessment (50%) Two non-examination assessments.	
Assessment 1: The Food Investigation Assessment	



WHAT DOES THE COURSE OFFER ME?

- The course aims to provide students with opportunities to experiment with a broad range of materials, equipment and techniques to produce a portfolio of work that demonstrates individual strengths.
- Students will learn how to use and master techniques from various art mediums such as ceramics, painting & drawing, printmaking, mixed media and digital technologies to create exciting work based on a range of themes.
- Students will also learn and understand about critical and cultural understanding related to specific artist attached to key art movements & genres.
- Pupils will work in a highly creative and stimulating environment, learning from innovating schemes of work that help facilitate accelerated creativity and progression within the Arts.

WHAT DOES THE COURSE INVOLVE?

The Fine Art course is based around using a variety of painting and drawing techniques:
Oil Painting, Drawing, Collage, Adobe Photoshop & Illustrator, Experimental Workshops, Dyes, Watercolour, Printmaking, 3-D Sculpture and Ceramics.

SKILLS INVOLVED

- EXTENDED WRITING
- WORKING WITH MY HANDS
- USING NUMBERS
- PERFORMING ACTIVITIES
- DESIGN & CREATE PROJECT
- USING ICT (NOT GAMING)
- DESIGN & CREATE PROJECT
- SPEAKING IN FRONT OF OTHERS

BEYOND GCSE

Students may decide to use this qualification to continue with further study. Alternatively, this qualification gives young people the preparation they need to succeed in the food and hospitality/catering industries. Knowledge of food science, nutrition and skilled practical cooking are all areas in demand from employers.

As well this course gives students vital life skills.

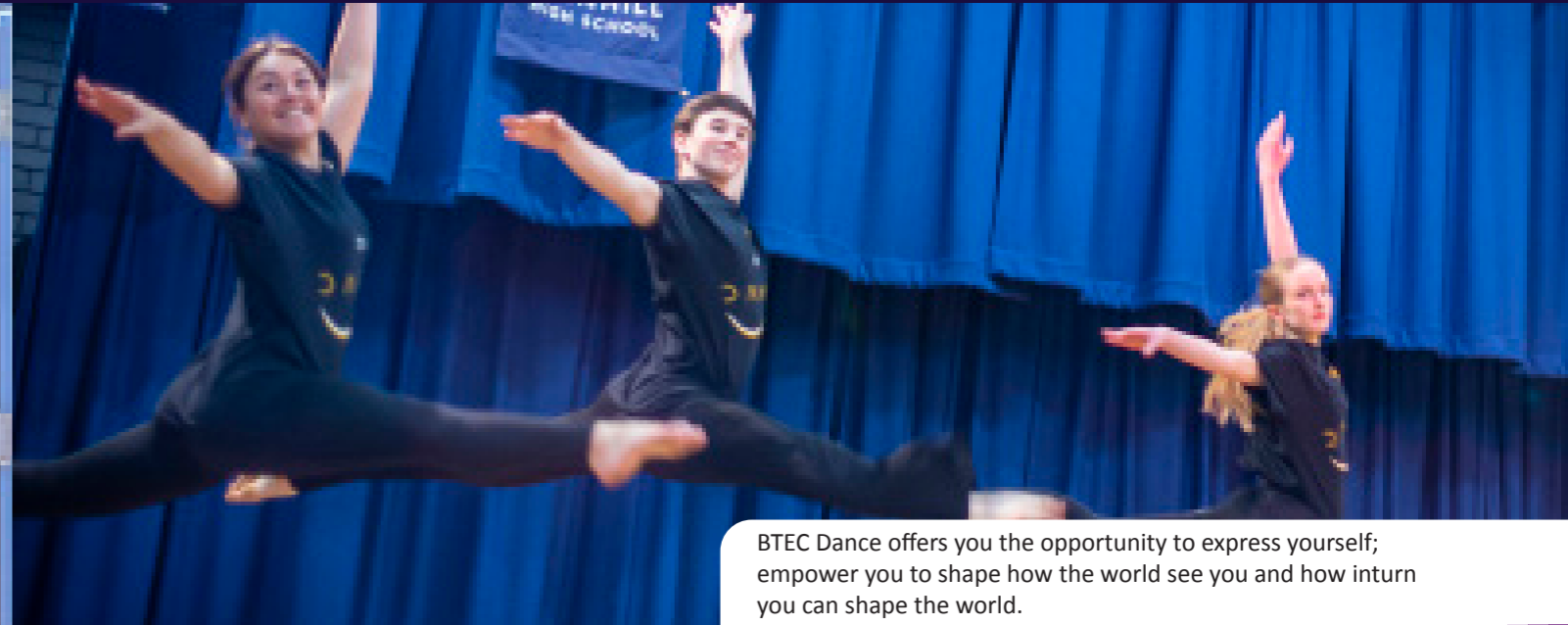
BEYOND GCSE

All art endorsements are available to study at A-level within the Sixth Form. Furthermore - 100% of all Sixth Form Art students who applied for a University degree course over the past eight years have achieved their first choice place.

The creative industry is always one of largest growing industry sectors in Britain. A Fine Art qualification will help you to achieve a career in the following areas:
Animation, Ceramics, Exhibition Design, Fashion design, Fine Artist, Furniture design, Museum curator, Make-up Artist, Printmaker.

SKILLS INVOLVED

- EXTENDED WRITING
- WORKING WITH MY HANDS
- USING NUMBERS
- PERFORMING ACTIVITIES
- DESIGN & CREATE PROJECT
- USING ICT (NOT GAMING)
- DESIGN & CREATE PROJECT
- SPEAKING IN FRONT OF OTHERS



WHAT DOES THE COURSE OFFER ME?

- You will develop self-confidence by taking part in practical workshops and performances.
- You will develop co-operation skills by working with others to create original and exciting pieces of theatre.
- You will develop creativity by devising your own performances using your ideas and your talents.
- You will develop your evaluations skills, enabling you to recognise your strengths and reach your potential.

WHAT DOES THE COURSE INVOLVE?

GCSE Drama encourages all students to work imaginatively in a collaborative context, creating, developing and communicating ideas. You will create and develop characters, explore fascinating plays from different times and cultures, devise your own plays and evaluate your work and the work of others.

BTEC TECH AWARD

OPTION

HOW WILL I BE ASSESSED?

Internal assessment

Components 1 and 2 are assessed through internal assessment. This style of assessment promotes deep learning through ensuring the connection between knowledge and practice.

Synoptic external assessment

Component 3 builds directly on Components 1 and 2 and enables learning to be brought together and related to a real-life situation. The external assessment takes the form of a set task taken under supervised conditions that are then marked and awarded a grade awarded by Pearson. Learners are permitted to resit the external assessment once during their programme by taking a new assessment.

The external assessment contributes 40 per cent of the total qualification GLH.

BTEC TECH AWARD

OPTION

HOW WILL I BE ASSESSED?

Internal assessment

Components 1 and 2 are assessed through internal assessment. This style of assessment promotes deep learning through ensuring the connection between knowledge and practice.

Synoptic external assessment

Component 3 builds directly on Components 1 and 2 and enables learning to be brought together and related to a real-life situation. The external assessment takes the form of a set task taken under supervised conditions that are then marked and awarded a grade awarded by Pearson. Learners are permitted to resit the external assessment once during their programme by taking a new assessment.

The external assessment contributes 40 per cent of the total qualification GLH.

BTEC Dance offers you the opportunity to express yourself; empower you to shape how the world see you and how inturn you can shape the world.

WHAT DOES THE COURSE OFFER ME?

You will study the following units:

- Exploring the Performing Arts.
- Developing Skills and Techniques in the Performing Arts.
- Performing to a Brief.

You will take part in a minimum of two professional performance opportunities in a theatre each year in addition to attending the wide range of extra-curricular opportunities on offer.

WHAT DOES THE COURSE INVOLVE?

This qualification offers the chance to gain sector-specific knowledge and skills through practical experience. It focuses on four key areas:

- Developing essential skills for performing arts, including reproducing repertoire and responding to stimuli in dance styles like Jazz, Contemporary, Commercial Dance, and Choreography.
- Understanding the processes behind effective performing arts work, including idea development, rehearsal, and the performance ethos valued across various industries, such as personal management, discipline, prioritization, confidence, and communication.
- Gaining knowledge crucial for applying skills, processes, and attitudes effectively in the sector, including understanding creative industry roles, responsibilities, and performance disciplines and styles.

SKILLS INVOLVED

- EXTENDED WRITING
- WORKING WITH MY HANDS
- USING NUMBERS
- PERFORMING ACTIVITIES
- DESIGN & CREATE PROJECT
- USING ICT (NOT GAMING)
- DESIGN & CREATE PROJECT
- SPEAKING IN FRONT OF OTHERS

BEYOND GCSE

GCSE Drama is a solid foundation for A-level Drama and Theatre Studies. It can lead to employment as an actor, stage technician, director, teacher or writer. Drama teaches invaluable skills which are transferable to any chosen career pathway.

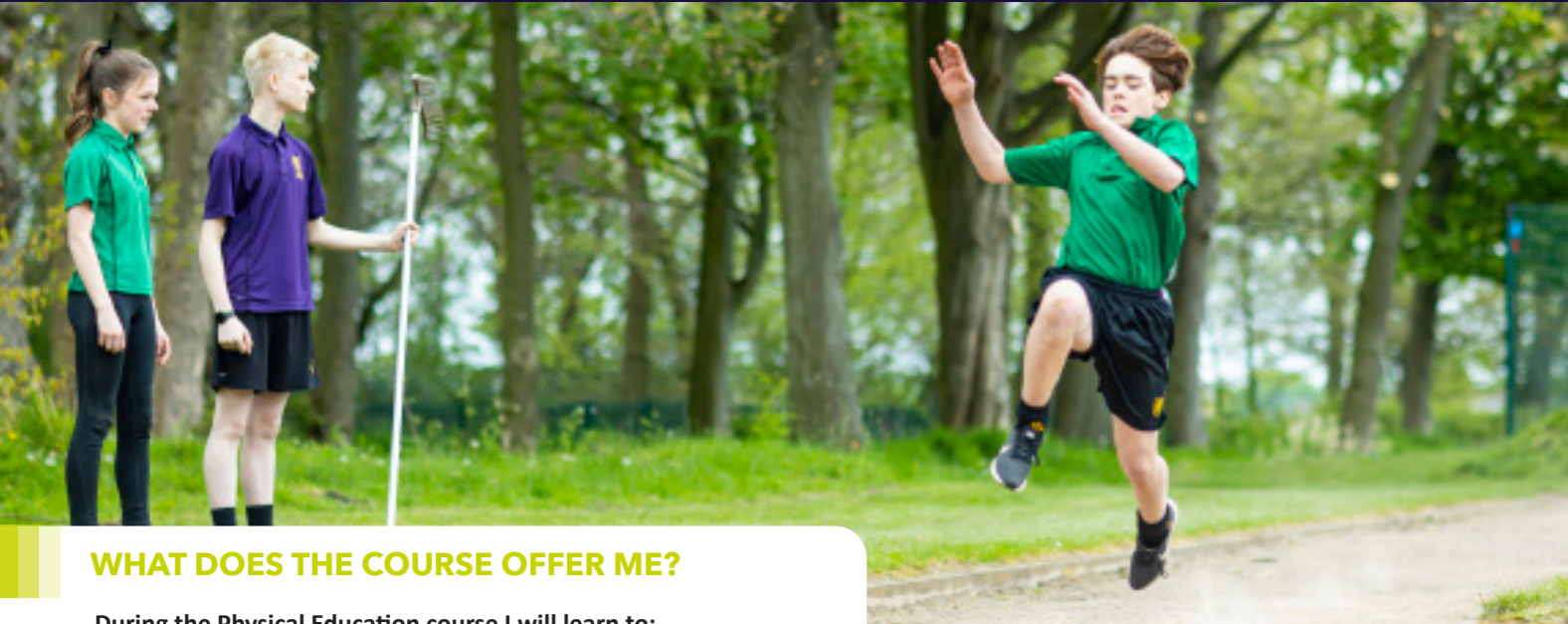
Employers always look favourably upon a Drama qualification as it represents someone who is creative, co-operative and confident.

BEYOND GCSE

The performing arts are a major part of the creative and cultural industries in the UK. Overall, the industry contributes £3.5 billion to the UK economy. There are 5,480 businesses and 101,593 people working in the performing arts sector. Study of this sector at Key Stage 4 will complement GCSE study through providing an opportunity for practical exploration and application alongside conceptual study, leading to strong opportunities to progress post-16.

SKILLS INVOLVED

- EXTENDED WRITING
- WORKING WITH MY HANDS
- USING NUMBERS
- PERFORMING ACTIVITIES
- DESIGN & CREATE PROJECT
- USING ICT (NOT GAMING)
- DESIGN & CREATE PROJECT
- SPEAKING IN FRONT OF OTHERS



WHAT DOES THE COURSE OFFER ME?

During the Physical Education course I will learn to:

- Develop knowledge and practical skills in a range of practical activities.
- Examine the effects of exercise and how training can improve performance.
- Identify ways to develop and maintain a healthy and active lifestyle through participation in physical activity.
- Appreciate the benefits of promoting 'sport for all.'

WHAT DOES THE COURSE INVOLVE?

Based on a mix of your child's practical and theory scores from KS3 a course will be selected where we believe they have the best possible chance of success and on a pathway that best suits their abilities in PE. This will either be a majority coursework-based qualification with one examination and less focus on a practical moderation or a majority examination course with two exams, less coursework but greater scrutiny on the practical element of the course.

GCSE / TECH AWARD

OPTION

HOW WILL I BE ASSESSED?

A coursework based **Tech Award** - which includes **20% Exam 80 % coursework**

GCSE PE

- Two one hour exam papers.
- Three practical areas - A mix of team and individual sports from published list from the board.
- One Performance Analysis Coursework.

OCR Cambridge National in Sport

- One 75 minute exam.
- Three practical sport areas - Any mix of team and individual from published list for the board.
- One practical coaching assessment.
- Two units of coursework.



CORE

HOW WILL I BE ASSESSED?

There will be no formal assessment in this subject.

WHAT DOES THE COURSE OFFER ME?

PE and Games will allow all students to undertake a range of activities which will allow them to develop and maintain a healthy and active lifestyle through their participation in a physical activity whilst promoting a love for life long participation.

Playing and taking part in PE and Sport is vital for the health and well being. Taking part in one hour of sport a week will allow pupils to maintain physically active and reap the benefits of maintaining a good health and fitness level. As well as this, pupils can use this hour to switch off from the coursework and exam stresses of Key Stage 4, taking advantage of the mental health benefits that come with regular sports participation.

WHAT DOES THE COURSE INVOLVE?

Throughout the year students will be placed on a carousel of different activities which they will be able to undertake for 1 hour per week. This will help to keep them both physically and mentally fit given the increasing emphasis on healthy lifestyle and establishing good habits for life.

SKILLS INVOLVED

EXTENDED WRITING	WORKING WITH MY HANDS
USING NUMBERS	PERFORMING ACTIVITIES
DESIGN & CREATE PROJECT	USING ICT (NOT GAMING)
DESIGN & CREATE PROJECT	SPEAKING IN FRONT OF OTHERS

SKILLS INVOLVED

EXTENDED WRITING	WORKING WITH MY HANDS
USING NUMBERS	PERFORMING ACTIVITIES
DESIGN & CREATE PROJECT	USING ICT (NOT GAMING)
DESIGN & CREATE PROJECT	SPEAKING IN FRONT OF OTHERS



Are you interested in understanding how the world of business works? How profit can be made - or lost? If so, then the Tech Award in Enterprise may be the course for you.

WHAT DOES THE COURSE OFFER ME?

Studying Enterprise will allow you to develop a broad range of skills and explore a variety of topics including:

- How businesses are run, considering both internal and external influences.
- An awareness of the opportunities and needs of different markets.
- The skills to create your own business in the future or study further business related courses in the Sixth Form.

WHAT DOES THE COURSE INVOLVE?

The qualification involves learning about local small to medium enterprises - why entrepreneurs chose to start the enterprise and how they operate on a day to day basis. This involves elements of research and critical thinking.

Beyond this initial knowledge you undertake your own market research for your own micro enterprise idea - you get to plan and run the idea should you wish to. This will involve creating the plan and pitching your idea in a 'Dragons Den' scenario.

TECH AWARD

OPTION

HOW WILL I BE ASSESSED?

Component 1

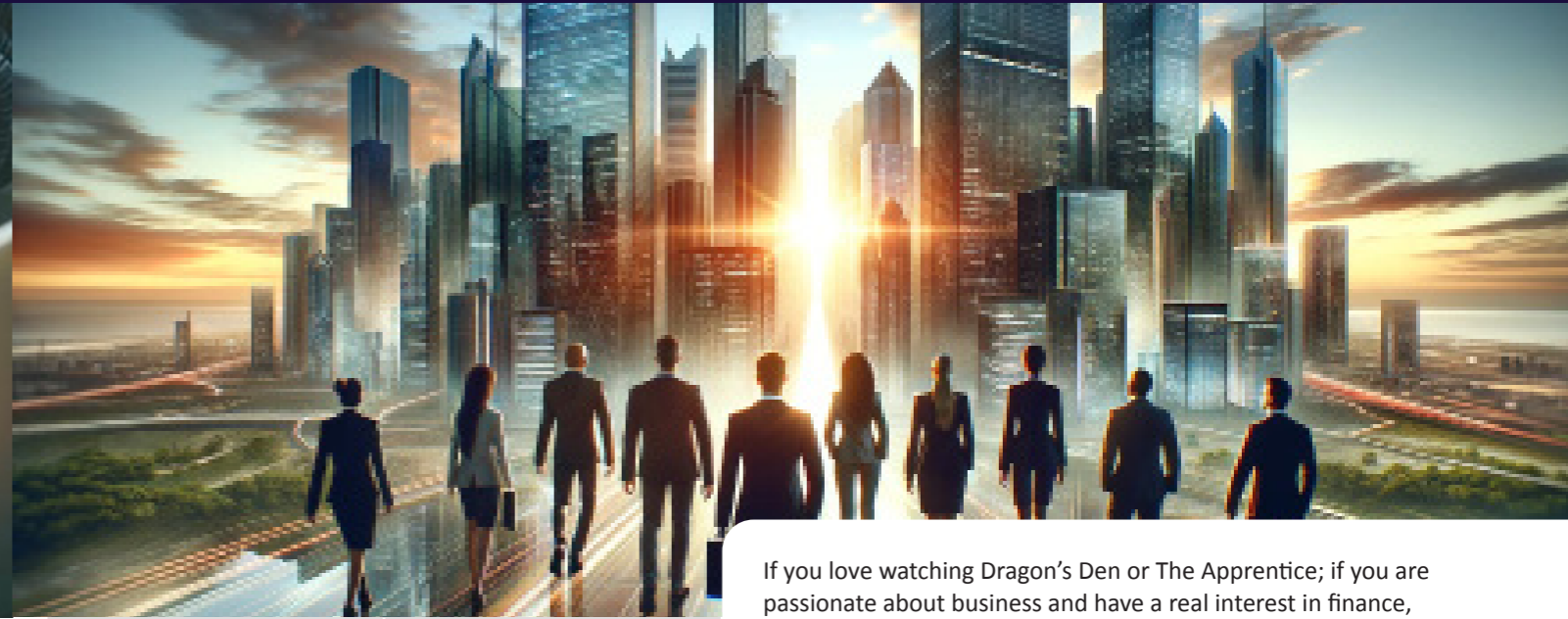
Exploring Enterprises (coursework)

Component 2

Planning and Pitching a Micro Enterprise Idea (coursework)

Component 3

Promotion and Finance for Enterprise (exam)



If you love watching Dragon's Den or The Apprentice; if you are passionate about business and have a real interest in finance, marketing and profit, then GCSE Business may be the course for you.

WHAT DOES THE COURSE OFFER ME?

Studying GCSE Business will allow you to develop a broad range of transferable skills in a variety of topics and areas such as:

- Skills to set up and run your own business.
- An awareness of how to market and promote a product or service.
- An understanding of how to keep track of your personal finance.
- Development of practical and logical thinking skills.
- Development of a skill set that employers see as essential.
- How to work as part of a team and take on leadership roles.

WHAT DOES THE COURSE INVOLVE?

The course is split into 2 different papers. The first of these looks at how business are set up and how business ideas come about. It will give students an understanding of how to keep track of the finances of the business and how to use marketing to help the business grow.

The second paper looks at how larger businesses can operate all across the world. It will allow students to consider the environmental impact of businesses as well as how to recruit new members of staff.

GCSE

OPTION

HOW WILL I BE ASSESSED?

Examination (100%)

GCSE Business is assessed with 2 examinations of 1 hour 45 minutes, each worth 50% of the final grade.

Questions in the assessment will be a variety of multiple choice, short answer and extended writing questions that will test subject knowledge, analytical and evaluative skills. Students are required to relate their answers to real life businesses and case studies that they are given in the exam

SKILLS INVOLVED



BEYOND GCSE

Enterprise allows students to progress through a variety of pathways. Many students choose to attend Rainhill Sixth Form and complete further study in Enterprise, Economics or both at A-level.

Enterprise is also one of the sought after qualifications by employers, who value the qualification as a key employability indicator.

BEYOND GCSE

Study in business, but also works well with Economics and Politics.

GCSE Business is also one of the sought after qualifications by employers, who value the qualification as a key employability indicator.

SKILLS INVOLVED





WHAT DOES THE COURSE OFFER ME?

The BTEC Level 2 Award in Health and Social Care will give you the opportunity to learn about both health care and social care services, jobs and the behaviours professionals should use when dealing with people. It will allow you to develop the skills and knowledge to understand how to make a difference to people in all Health and Social Care settings.

WHAT DOES THE COURSE INVOLVE?

- Component 1:** Focuses on understanding human growth, development, and vulnerability, highlighting how lifestyle, relationships, and life events influence individuals.
- Component 2:** Covers working in health and social care, emphasizing the values and behaviours that support good practice and the importance of personalized care.
- Component 3:** An exam-assessed unit, integrates knowledge from the first two components to assess and improve an individual's health and well-being, considering their choices and conditions.

SKILLS INVOLVED

- EXTENDED WRITING
- WORKING WITH MY HANDS
- USING NUMBERS
- PERFORMING ACTIVITIES
- DESIGN & CREATE PROJECT
- USING ICT (NOT GAMING)
- DESIGN & CREATE PROJECT
- SPEAKING IN FRONT OF OTHERS

BEYOND GCSE

You can complete further studies in Health and Social Care at Rainhill High School in the form of A-level 3 BTEC Extended Certificate or Diploma which are equivalent to A-level qualifications. You could choose to enrol onto the T-Level Science Health in Adult Nursing which is good for any health career aspirations, or you could do the Level 2 T-Level transition year at and continue to do Health and Social Care. Many health and social care providers also offer Level 2, 3 and degree apprenticeships.

There are many careers in both Health and Social Care and the industry has only grown bigger since the pandemic.



WHAT DOES THE COURSE OFFER ME?

You will develop knowledge and understanding of the aims, products and services of different travel and tourism organisations, their use of consumer technologies, the features of tourist destinations, How organisations meet customer needs and preferences, and the influences on global travel and tourism. You will develop skills of research, planning and making decisions and judgements based on evidence.

WHAT DOES THE COURSE INVOLVE?

- This Tech Award gives students the opportunity to develop applied knowledge and understanding in a range of areas:
- The aims of travel and tourism organisations, how different organisations work together and types of travel and tourism, the features that make destinations appealing to visitors and different travel routes.
 - How organisations use market research to identify travel and tourism trends, and customer needs and preferences, and selection of products and services and planning a holiday to meet customer needs and preferences.
 - Factors that may influence global travel and tourism, and how travel and tourism organisations and destinations respond to these factors, and the potential impacts of tourism on global destinations and how destinations can manage the impacts of tourism and control tourism development to achieve sustainable tourism.

TECH AWARD **OPTION**

HOW WILL I BE ASSESSED?

- Coursework 60%
- Examination 40%

- Component 1** – Internally assessed; Travel and Tourism Organisations and Destinations [30%]
- Component 2** – Internally assessed; Customer Needs in Travel and Tourism [30%]
- Component 3** – Examination; Influences on Global Travel and Tourism [40%]

The three components in the qualification give students the opportunity to develop a broad knowledge and understanding of the travel and tourism sector, and relevant transferable skills such as research and communication skills.

BEYOND GCSE

There are progression routes into KS5 through Level 3 BTEC National in Travel and Tourism, which prepares students for apprenticeships, employment in the travel and tourism sector or a move into Higher Education to study the subject at degree level.

SKILLS INVOLVED

- EXTENDED WRITING
- WORKING WITH MY HANDS
- USING NUMBERS
- PERFORMING ACTIVITIES
- DESIGN & CREATE PROJECT
- USING ICT (NOT GAMING)
- DESIGN & CREATE PROJECT
- SPEAKING IN FRONT OF OTHERS

WWW.RAINHILLHIGHSCHOOL.ORG.UK

Warrington Road, Rainhill, Merseyside, L35 6NY Telephone: 01744677205



/Rainhillhigh



@Rainhillhigh