



**RAINHILL
HIGH SCHOOL**

LEARN THINK CONTRIBUTE CARE

**2025 - 2026
SUMMER INFORMATION
BOOKLET**

CONTENTS

Who to Contact	2
Year Group Badges	2
Term Dates	3
House System	3
Rainhill Student Parliament	3
Rewards and Recognition	4
Professional Standards	5
General Information	6-7
ATL	8
Attendance	9-10
Behaviour	11
Equipment	12
School Uniform	13
School Uniform (Shoes)	14
Mobile Phones/E-Safety	15
Communication/Funding	16
Student Services/Facilities	17



HEADS OF FACULTY AND HEADS OF DEPARTMENT IN 2025/26 ARE:

Miss Dickman Head of English Faculty
Mr Rimmer Head of Mathematics Faculty
Mr Flynn Head of Science Faculty
Miss Harper Head of Biology
Mrs Bancroft Head of Chemistry
Mr Hurst Head of Physics
Miss Wood Head of Geography
Mr Swan Head of Humanities Faculty & History
Mr Taylor Head of RE
Mr Cowley Head of Computer Science
Mrs Evans Head of Social Sciences Faculty
Mr Farrell Head of Business Studies
Miss D'Anna Head of Languages Faculty
Mr Bennett Head of Visual Art & Design Technology Faculty
Mrs King Head of Food Studies
Mrs McCann Head of Performing Arts
Mr Wood Head of PE Faculty
Mr Burgess Head of PSHE & Citizenship
Ms Rothwell SENCO

RAINHILL YSMs and YPLs

Year 7 - Miss Gordon & Mr Giles
Year 8 - Miss Hill & Mr Barry
Year 9 - Mr Lambert & Mr Brown
Year 10 - Miss Humphreys & Mr Webster
Year 11 - Mr Rotheram & Mrs Haselden

RAINHILL SIXTH

Director of Rainhill Sixth **Mr Cunningham**
Progress Mentor **Mrs Thomas**
Study Supervisor **Miss Garton**

TERM DATES

Start of Term Autumn Term

- Monday 1st September - Inset Day
- Tuesday 2nd September - all students in

End of half term

- Friday 24th October

Start of term

- Monday 3rd November
- Friday 21st November - Inset Day

End of term

- Friday 19th December

Start of Spring Term

- Monday 5th January - Inset Day
- Tuesday 6th January - all students in

End of half term

- Friday 13th February

Start of term

- Monday 23rd February

End of term

- Friday 27th March

Start of Summer Term

- Monday 13th April

End of half term

- Friday 22nd May

Start of term

- Monday 1st June

- Friday 26th June - Inset Day

End of Summer term

- Friday 17th July

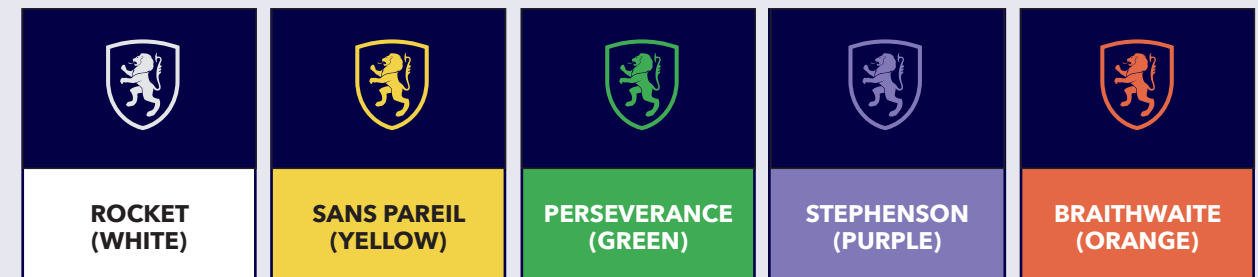
HOUSE SYSTEM

Each student is allocated to a House. This is determined by which tutor group they are in. Students PE top/strip on tie will be the colour of their House.

The purpose of the Houses is to recognise the day to day contributions to the school community but also to recognise and celebrate extraordinary achievements and contributions through a House point system. Everyone is included, everyone makes a contribution. Events are run throughout the year by all faculties, year groups and Houses; a number include charity work and other good causes. Students are actively encouraged to participate in activities that promote a positive school culture within and beyond the school day, this may be part of the events team, faculty buddies or the local community support group. The House System will drive our rewards system. Students will receive points for:

- Participating in House Events
- Participating in enrichment/extra curricular events
- Making a contribution to the wider school/community
- Demonstrating leadership and initiative
- Making a difference to others
- Work in lesson
- Attitude to learning

Points are accumulated by students throughout the year and during House assemblies, students will be recognised and rewarded for their efforts. Further information regarding House Events will be included in the Parent and Student Newsletter.



YEAR GROUP BADGES

In order to assist staff, particularly Lunchtime Supervisors, in identifying which Year Group students are in, each pupil will wear the following colour badge as part of their uniform.



YEAR 7



YEAR 8



YEAR 9



YEAR 10



YEAR 11



RAINHILL Student
Parliament

Our Student Parliament is a new initiative, developed from our sixth form students who wanted all young people to have the opportunity to have their voices heard whilst developing their debating skills.

All form groups have a Form Rep who goes to each parliament session to represent the views of their form. Each session ends with a vote on a key issue and this is then presented to the Senior Leadership Team for approval. We are proud to put student voice at the heart of our development and want all students to be involved in the democratic process. The Student Parliament also promotes the British Values of Democracy, Rule of Law, Individual Liberty and Mutual Respect.

STUDENTS CAN ACHIEVE THE FOLLOWING REWARDS:



VERBAL PRAISE
LIONS (NEW FOR 2025/26)
ACHIEVER AWARD
HOUSE POINTS
ATTENDANCE AWARDS
POSTCARDS OF PRAISE
BADGES (FOR REPRESENTING SCHOOL)
RAINHILL EXPERIENCE

REWARD TRIPS
WINTER REWARD EVENT YEAR 10 AND YEAR 11
SPRING REWARD EVENT YEAR 7 AND YEAR 8
SUMMER REWARD EVENTS YEAR 7 TO YEAR 10
(CRITERIA TO FOLLOW)



PROFESSIONAL STANDARDS

- Important qualities and behaviours we expect from students.
- Help make the school a positive and productive place to learn.
- When students follow these values, they build skills and habits that help them do well in school and grow into responsible, respectful people.
- Following these standards helps make the school safe, supportive and respectful for everyone.



CONDUCT

The manner in which we behave



COMMITMENT

The quality of being committed to a task or team



ORGANISATION

To be able to manage and prioritise responsibilities



PRIDE

Feeling proud of yourself, your achievements and the communities you are in



MORALS

The rules and qualities that support you in making good decisions

From September, the school site will be open to students from 8:30am to 3:30pm for the majority of children. The front gates will not open until 8.30am and students should not arrive before 8:30am, as supervision will not be in place prior to this time.

Parents who require earlier drop-off will be able to book their child into our Breakfast Club, which will run before the main site opens. Further information on booking and timings to follow.

Students attending after-school extracurricular clubs will leave the site via the pond side exit once their activity has finished. Please ensure suitable arrangements are in place for prompt collection from this point. Please ensure you drop your child off at the top entrance, as the access barrier will be down from 8:30am to ensure student safety.

Thank you for your support in helping us manage the school day safely and smoothly.



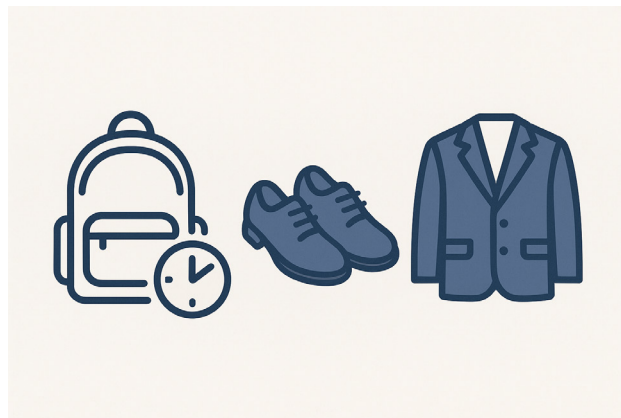
SITE ENTRY - MORNING

To ensure students are ready to learn and uphold the new Professional Standards, new morning processes will be introduced in September.

YSMs/YPLs will be on the gate each morning; they will be resolving any issues with uniform (including shoes and bags) or presentation (jewellery, make up). This will help ensure that all students enter school in line with expectations and are ready to start the day positively.

Students will be offered a replacement item from student services for the day. If we cannot resolve the issue, we will be in touch with you as we want to ensure that your child does not miss learning with their teacher. In most cases, this will be a simple conversation or loan item to support a quick return to lessons.

As always, we ask you to ensure your child arrives to school in the correct uniform and has the correct equipment. This helps them begin the day with confidence and focus, and supports a smooth and consistent start for all students.



PUNCTUALITY TO SCHOOL/TUTORIAL

We introduced a same day late detention in April 2025 for any student who arrives at school after 8.55am or is on site but is late to tutorial. This has had a positive impact on punctuality and will continue in September. If your child is late to school/late to tutorial, they will complete a same day 20-minute lunchtime detention; should they fail to attend it will increase to an after school 60-minute detention.

We understand that students are sometimes late to school due to unforeseen circumstances. For example, if there is an accident on local roads, or a school bus is late, then we will not be sanctioning students. However, it is important that parents, if they are dropping off their children, leave enough time to get to school before we start at 8:50am.

PLANNER

School planners have been reintroduced, and all students will receive their planner on Tuesday 2nd September. Students can record key information in this planner. Their timetable will be recorded in their planner and equipment mat for daily equipment checks. Plus, there are sections to record rewards, weekly attendance and toilet visits during lessons.

Students will need to bring their planner every day and carried in their bag. They must look after them and ensure they are kept in good condition (no graffiti). Replacement planners can be bought from Student Services for £3.

Key to Success folders are no longer required from September.



TOILETS

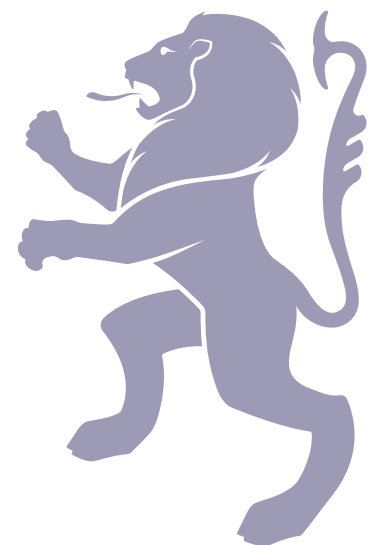
From September, the main student toilet block will be closed during lessons, they will open at breaktime and lunchtime as normal.

Should a student need to go to the toilet during lesson time, they will be escorted to a toilet in their teaching block. They will be asked to leave their mobile phone on their teacher's desk and will need their planner to exit the classroom.

The on-call members of staff will escort them to and from the toilet and record this in their planner. If a student genuinely needs the toilet during lesson time, following this process should not be an issue.

This system has been introduced as too much learning time is lost, with too many students out of the classroom too often. We hope this will support teaching and learning and maximise progress.

Students with a medical condition that require a toilet pass will follow a different system, individual parents will be contacted over the holidays.



DINING ROOMS

From September, all students must have their ID cards with them to access the dining rooms, this will improve efficiency.

Replacement cards can be purchased from Student Services for £2.50. If your child requires a new ID card before the start of the new academic year, please contact us via Synergy (General Tab).

If a student does not have their ID card, they will access the dining room at the very end of the break/lunch service.



ATL 1

EXCEEDING PROFESSIONAL STANDARDS

ATL 2

PROFESSIONAL STANDARDS MET

ATL 3

PROFESSIONAL STANDARDS NOT MET

ATL 4

LOW LEVEL DISRUPTION TO LEARNING

ATL 5

SERIOUS DISRUPTION, REQUIRES CALL OUT

WHY REGULAR ATTENDANCE IS VERY IMPORTANT

OUR EXPECTATION IS THAT ALL STUDENTS ACHIEVE AN ATTENDANCE OF 97%+

Any absence affects education and regular absence will seriously affect students learning. The Department for Education (DFE) has published a strong link between poor school attendance and low levels of attainment.

Students who have time off often find it difficult to catch up and do well.

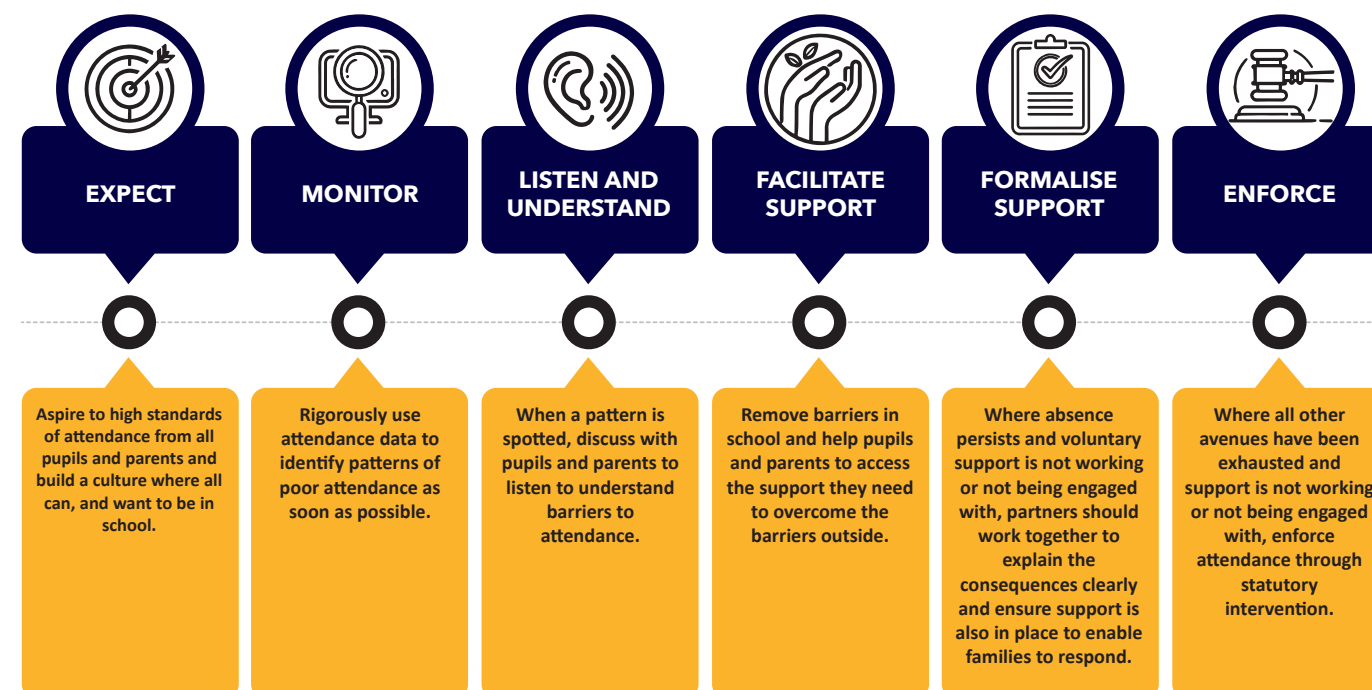
The school needs to return to pre Covid attendance levels, huge improvements have been made during the 2024-25 academic year.

Nevertheless, absence is still too high for the following reasons

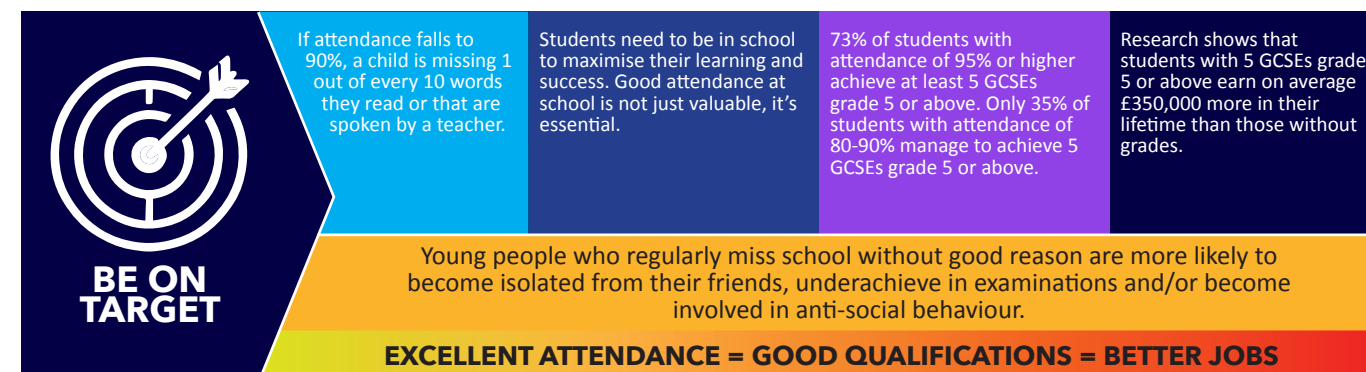
- Friday attendance – lower than Monday-Thursday
- Last week of the half term
- Due to heavy rain/snow
- Feeling 'under the weather' as opposed to illness
- Term Time Holidays – we ask that you do not book them

The school will seek to support student absence and it is imperative that we work together with parents to improve school attendance.

The diagrams below and the attendance flow chart gives more information on the school's response to attendance.



EXCELLENT ATTENDANCE OVER 97% IS THE KEY TO SUCCESS



YEARLY ATTENDANCE	LOST LEARNING DAYS	THIS EQUATES TO
95% ATTENDANCE	▶ 9 DAYS ▶	ALMOST 2 SCHOOL WEEKS
90% ATTENDANCE	▶ 19 DAYS ▶	ALMOST 4 SCHOOL WEEKS
85% ATTENDANCE	▶ 29 DAYS ▶	ALMOST 6 SCHOOL WEEKS
80% ATTENDANCE	▶ 38 DAYS ▶	ALMOST 8 SCHOOL WEEKS
75% ATTENDANCE	▶ 48 DAYS ▶	ALMOST 10 SCHOOL WEEKS
70% ATTENDANCE	▶ 57 DAYS ▶	ALMOST 11.5 SCHOOL WEEKS
65% ATTENDANCE	▶ 67 DAYS ▶	ALMOST 13.5 SCHOOL WEEKS

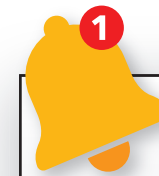
ANY ABSENCE WITHOUT A REASON WILL BE UNAUTHORISED

- If your child is late after the morning registers close at **9.20am**, they will be registered using a U code for the morning session.
- A U code means that the morning session will be an unauthorised absence. (e.g. will be registered as absent in the morning, will be marked as present in the afternoon)
- If your child receives a U code, they will be issued with a same day **1 hour after-school detention**.



ATTENDANCE

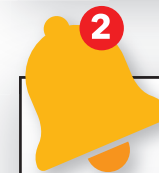
**GOOD ATTITUDE AND BEHAVIOUR IS AN EXPECTATION AT RAINHILL HIGH SCHOOL.
WE ASK THAT STUDENTS DO THE FOLLOWING:**



REMINDER

Reminder 1

- Thank you for...
- Do you need a...
- It's great how you've... now... let's...
- We are here to learn, now let's...



REMINDER

Reminder 2

- I would like to see
- I have asked you to **contribute**
- **Think** about your choices...



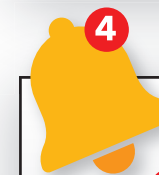
TIME OUT

Reminder 3

ATL 4

20 minute after-school detention.

- Actively listen to the student
- Your choice is impacting the **learning** of yourself and others
- Give choices
- Give thinking time



CALL OUT

Reminder 4

ATL 5

Unsuccessful Call Out = 60 minute detention.

- Senior staff will attend
- Opportunity to reengage with learning & rejoin class
- Removal by senior staff if this is unsuccessful

PROFESSIONAL STANDARDS - EQUIPMENT REQUIRED

If you do not arrive equipped, you do not arrive ready to learn; you are not in the pursuit of excellence – your equipment is your responsibility.

The following equipment is a requirement and must be brought in every day, by every student.

Replacements of stationery can be purchased at student services.

1. **A school bag or rucksack** must be large enough to carry books, school planner and equipment. If a student does not have a bag, they will expected to borrow a bag for the day.
2. **Student ID Cards** - To improve efficiency in the dining rooms, students must bring their ID cards with them, from September they must have their ID cards with them to access the dining rooms. Replacement cards can be purchased from student services for £2.50
3. **School Planner** will be given out to all students in September; must be clean, not graffitied and looked after. Replacements can be purchased from school for £3.
4. **Stationery** - every piece is essential;
 - a. Pens, blue or black, plus purple
 - b. Pencil, plain, plus rubber
 - c. Highlighter
 - d. Ruler
 - e. Protractor
 - f. Calculator [Scientific]
 - g. Pair of compasses
 - h. Student ID badge
 - i. Reading book

Equipment is checked every day by form tutors. A sanction will be put in place if equipment is missing during tutorial time or during any lesson in the day.



UNIFORM REQUIREMENTS

OFFICIAL SCHOOL BLAZER

In the event of temperatures exceeding 21 degrees Celsius, students do not need to wear their blazers around the school site. They need to have them in their possession but can be stored in their bags. Students will be informed if the temperature exceeds 21 degrees Celsius on any given day.

OFFICIAL SCHOOL/HOUSE TIE

WHITE SHIRT

BLACK FLANNEL TROUSERS

KNEE LENGTH BOX PLEAT SKIRT - NO PINAFORES

Over the very recent past, post-lockdown, girls' skirts have increasingly been worn above the knee. In some cases, this has been taken to the excess. Please ensure that the skirts are box pleat and knee length.

BLACK KNEE LENGTH SOCKS OR BLACK TIGHTS

If wearing a skirt. Tights need to be a minimum 40 denier.

BLACK SOCKS

If wearing trousers.

BLACK SHOES - IF IN DOUBT CONTACT THE SCHOOL

Not Trainers.

COLOURED YEAR BADGE

SCHOOL PE KIT

The PE kit is part of your child's school uniform and the correct kit needs to be worn. We fully suggest that your son/daughter brings their fleece to every lesson as this will be the only outer layer they are permitted to. Along with their t-shirt, shorts and socks girls can wear ALL BLACK leggings that can be purchased from the school's uniform supplier and boys can bring ALL BLACK tracksuit bottoms (in the event of very cold weather). A black base layer can be worn under T shirts and shorts again, in the event of cold weather.

APPEARANCE

Jewellery: Only wristwatches are allowed. Earrings, rings, bracelets, and necklaces are not permitted. Any jewellery will be confiscated and returned after detention.

Make-up: No make-up or false eyelashes allowed. Students wearing make-up will be required to remove it before lessons.

Nails: No false nails or nail varnish are permitted.

Earrings: Earrings are not allowed. Plastic retainers are permitted. Ensure earrings are left at home, and if your child is getting their ears pierced, do so at the start of the holidays to allow time for healing. Wearing plasters over earrings is not allowed.

No visible piercings: eg. Nose, Tongue, Lip.

DANCE

- Key stage 3 dancers - expected to wear school uniform and remove ties, shoes, socks and blazers.
- Key stage 4 dancers - expected to wear PE kit and bare feet, or leggings and a t-shirt. No cropped tops.



If you need support and are eligible for free school meals, please contact the school as support is available.

WHAT HAPPENS IF... ...A STUDENT DOES NOT HAVE THE CORRECT UNIFORM?

STAGE 1

A school version will be offered to borrow for the day.

STAGE 2

Parents will be contacted and arrangements made to bring the correct uniform into school.

STAGE 3

Detention issued.

BLACK SHOES - NOT TRAINERS



RATIONALE FOR BLACK SHOES

- Shoes are smart
- Preparing young people for the world of work
- Raising standards of the school uniform
- Consistent approach across the school

NOT PERMITTED

- ANY BOOTS
- BLACK TRAINERS
- KICKER TOVNI
- KICKER KARIKO GIBB

The shoes pictured below are intended to be a visual guide only. The brands listed are only given to illustrate that acceptable shoes are widely available. We are not recommending these brands, or restricting parents to these brands.



If you buy shoes from Clarks, please ensure that they **are** permitted. Clarks advertise footwear that they describe as shoes, the following fall into our **inappropriate** footwear category:

Tri Buddy Junior Monte Lite BL Mini Racer Flare Lite Jnr Hula Thrill Nathan Lace/Strap

Commonly worn boys' shoe during 2024/25
Kicker Troiko Lace



- All students must be in appropriate black shoes.
- Black Trainers are not part of the school uniform.
- If your child tells you that trainers are permitted - they are not.

If you are unsure of what shoes to purchase please contact the school for more information.

USE OF MOBILE PHONES BY STUDENTS

- Mobile Phones must not be used or be visible or heard during the school day.
- Mobile Phones must be **kept in bags**, not in pockets.
- Students will be allowed to use mobile phones before 8.50am and after 2.55pm.
- Phones must be switched off (not just put on 'silent').
- Students are not permitted to listen to music during the school day.
- Any device used to do so will be confiscated and responded to in the same way as the mobile phone (e.g., ear pods)
- Mobile phones are not permitted in any internal or external exam or test environment. Bringing a phone into the test room can result in your exam being declared invalid.

Parents must use the school office as the first point of contact if they need to get in touch with their child during the school day. They must not try to contact their child on their personal mobile during the school day.



SANCTIONS

1st occurrence	<ul style="list-style-type: none"> • 60-minute same day detention and the phone/ear pods will be confiscated. • Phone/ear pods will be returned to the student upon completion of the detention. • A Synergy behaviour entry will inform parents of the confiscation.
2nd occurrence	<ul style="list-style-type: none"> • 60-minute same day detention and the phone/ear pods will be confiscated. • Phone/ear pods will not be returned to the student. • A Synergy behaviour entry will inform parents of the confiscation. • Parents/carer must collect (between 3-4:30pm)
3rd occurrence	<ul style="list-style-type: none"> • 60-minute same detention and the phone/ear pods will be confiscated • Phone/ear pods will not be returned to the student. • A Synergy behaviour entry will inform parents of the confiscation. • Parents/carer must collect (between 3-4:30pm) • Parent meeting to take place (during collection) • Arrangement put in place for phone/ear pods to be handed in each day .
4th occurrence	<ul style="list-style-type: none"> • If the arrangement to hand phone/ear pods is not adhered to, and phone/ear pods are seen and confiscated again. The student will be suspended for persistently not following school policy. • Any further breaches to the policy will lead to further suspensions.

E-SAFETY

Y7 E-SAFETY FOCUS During first half term	ANTI-BULLYING WEEK From 10th November 2025
Y7 ANTI-BULLYING DAY 17th September 2025	SAFER INTERNET DAY 10th February 2026



HELP PROTECT YOUR CHILD BY ACCESSING THE FOLLOWING:

Visit the school website Parent Zone/Help & Support/Internet Safety.

Contact your internet provider to set up restrictions/monitoring.

It is important that we continue to develop students understanding of E Safety and keeping safe online, this is a key focus in PSHE/Tutorial/Assemblies.

STUDENTS WILL RECEIVE THE FOLLOWING INFORMATION

- How to keep safe online
- Applying settings on social networking sites
- E Safety and the Law
- What to do if you feel threatened online
- Only communicating with people you know
- AI and Deep Fakes

FOR SCHOOL INFORMATION:

School Synergy is the communication portal between Parents & Rainhill High School.



We have partnered with School Synergy and utilise this system to provide a more in depth communication platform between the school, student's and parents/carers.

School Synergy enables parents and carers to have an immediate overview of many aspects of school life, including live behaviour information, daily attendance and your child's timetable. It also makes it much easier to share information with you. Through the Parent Portal, you will be able to access school letters, calendar and event information as well as communicate directly with your child's teachers.

Login in details will be sent to Year 7 parents in September. Existing logins still apply for all other year groups.



SCAN THIS CODE

**COULD YOUR CHILD QUALIFY FOR FREE SCHOOL MEALS?
HAS YOUR INCOME CHANGED THIS YEAR?
COULD YOUR CHILD BE ELIGIBLE FOR ADDITIONAL FUNDING?**

**Do any of the statements below apply to you?
If they do your child may be eligible to access
additional government funding at school.**

Your child may be able to get free school meals if you get any of the following:

- Income Support
- Income-based Jobseeker's Allowance
- Income-related Employment and Support Allowance
- Support under Part VI of the Immigration and Asylum Act 1999
- The guaranteed element of Pension Credit
- Child Tax Credit (provided you're not also entitled to Working Tax Credit and have an annual gross income of no more than £16,190)
- Working Tax Credit run-on - paid for 4 weeks after you stop qualifying for Working Tax Credit
- Universal Credit - if you apply on or after 1 April 2018 your household income must be less than £7,400 a year (after tax and not including any benefits you get)

It is important to give children the best possible chance in life, open as many doors as possible and broaden their horizons.

Additional funding may be available to school to support children who have faced challenges, overcome difficult times or are in a low income household.

Your child may be able to access additional funding if:

- They have been adopted from care
- They are on a special guardianship order
- They have a parent that regularly serves or died whilst serving in the armed forces

If you think any of the three statements above apply to you please email: yacine.rachi@rainhillhigh.org.uk with details.

If any of the statements above apply to you, please ensure you complete a FREE SCHOOL MEAL application from your local council. You will apply to the council that your home address is part of.

St Helens

<https://www.sthelens.gov.uk/schools-education/school-meals/free-school-meals/>

If you have any questions regarding Free School Meals you need to contact St Helens Council on **01744 676666**

Knowsley

<https://parentportal.knowsley.gov.uk/web/portal/pages/home>

If you have any questions regarding Free School Meals you need to contact St Helens Council on **0151 489 6000**

Liverpool

<https://liverpool.gov.uk/benefits/free-school-meals>

If you have any questions regarding Free School Meals you need to contact Liverpool Council on **0151 233 3009**

Warrington

<https://www.warrington.gov.uk/freeschoolmeals>

If you have any questions regarding Free School Meals you need to contact Warrington Council on **01925 443322**

Widnes & Halton

<https://www3.halton.gov.uk/Pages/EducationandFamilies/Schools/FreeSchoolMeals.aspx>

If you have any questions regarding Free School Meals you need to contact Halton Council on **0151 511 7188**

THE FOLLOWING ITEMS CAN BE PURCHASED FROM STUDENT SERVICES:

RUBBER	£0.20	BLACK/BLUE/PURPLE PEN	£0.20
PENCIL	£0.20	RULER (30CM)	£0.20
PROTRACTOR	£0.20	SHARPENER	£0.20
HIGHLIGHTER	£0.30	COMPASS	£0.50
PENCIL CASE (SMALL/LARGE)	£1.00	MATHS SET	£2.00
PLANNER	£3.00	SCIENTIFIC CALCULATOR	£9.00



FACILITY HIRE

All of our facilities are available to hire. For more information contact Community Use on **01744 677205** EXT 350



FACILITIES AVAILABLE

3G Pitch
Sports Hall
Gymnasium
Arts Theatre
Dance Studio
Conference Room
Classrooms
Grass Pitches

 Rainhill High Facilities

 @facilitieshire

 Rhs Facility Hire



RAINHILL
HIGH SCHOOL

Warrington Road, Rainhill, Merseyside L35 6NY

[RAINHILLHIGH SCHOOL.ORG.UK](https://rainhillhighschool.org.uk)